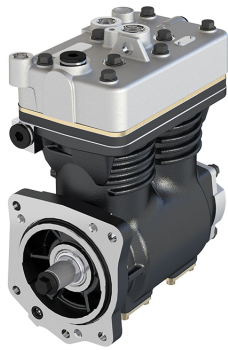


**Application:** 4 SERIES TRUCK - P / G / R / T TRUCK - 4 SERIES BUS / F / K / N BUS

**171.01.1000**

**171.01.2000  
(WITH GEAR)**

OEM	OE
LK4941	1770607
K016615ES	1796663
K016615000	571228
K003960000	579321
K012799000	1541705
K012799ES	
K014896000	
K014896ES	

<b>Cylinder Bore</b>	Ø88
<b>Stroke</b>	50 mm
<b>Swept Volume</b>	608 cc
<b>Air Inlet Port Size</b>	M26x1,5
<b>Air Delivery Port Size</b>	M26x1,5
<b>Number of Cylinders</b>	2
<b>Through Drive</b>	Yes
<b>Unloader Port Size</b>	M22x1,5
<b>Water Or Air Cooled</b>	W
<b>Water Inlet Port Size</b>	M18x1,5
<b>Water Delivery Port Size</b>	M18x1,5
<b>Water Cooled Valve Plate</b>	Yes

## Components

171.01.1100	Crankcase	OEM	OE

156.01.1200	Cylinder Head	OEM	OE
		SEB01444004	1424766

171.01.1210	Cylinder Head With Plate Kit	OEM	OE

171.01.1300	Plate Kit	OEM	OE

110.01.1400	Connecting Rod	OEM	OE
		SEB00967004	3097151

157.01.1500	Crankshaft	OEM	OE

157.01.1600	Bearing Cover	OEM	OE
		K036087K50	1932013

102.01.2600	Bushing	OEM	OE
		EB00819	1315274 1697278 1697286 5001830853 1697286

102.01.1900	Bottom Cover Kit	OEM	OE
		EB01058	1283816 1697772

110.01.2700	Screw Kit	OEM	OE

110.01.1700	Piston With Rings (STD)	OEM	OE
		SEB22555 I81169004	1361265 1409318 1698848 3095841 51541036001 81541190007 85101375
110.01.1700-Ø88.00 mm 110.01.1710-Ø88.25 mm 110.01.1720-Ø88.50 mm 110.01.1730-Ø88.75 mm 110.01.1740-Ø89.00 mm			

110.01.1800	Piston Ring Kit (STD)	OEM	OE
		I811690062 I139526F0061	3097153 85100626
110.01.1800-Ø88.00 mm 110.01.1810-Ø88.25 mm 110.01.1820-Ø88.50 mm 110.01.1830-Ø88.75 mm 110.01.1840-Ø89.00 mm			

171.01.2300 Repair Kit With Bushing	
OEM	OE

171.01.2350 Repair Kit w/o Bushing	
OEM	OE

171.01.2330 Repair Kit	
OEM	OE

171.01.2320 Repair Kit	
OEM	OE

171.01.1280 Head Repair Kit	
OEM	OE

112.01.2100 Gasket & Sealing Kit	
OEM	OE

171.01.2200 Valve Kit	
OEM	OE

102.01.2500 Unloader Valve Kit	
OEM	OE

156.01.2900 Gear	
OEM	OE

157.01.2900 Gear	
OEM	OE

OEM	OE

OEM	OE

OEM	OE

OEM	OE

OEM	OE

OEM	OE

OEM	OE

OEM	OE