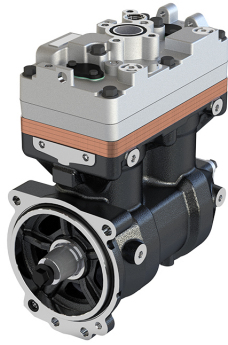
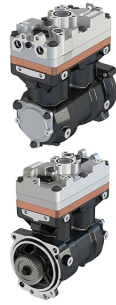


**Application:** P / G / R / T TRUCK - F / K / N BUS

**172.01.1000**

**172.01.2000  
(WITH GEAR)**

OEM	OE
LK4949	2760239
K053603N05	570969
K053603N00	2024410
K155389N00	
K155389N05	
K155389N55	

<b>Cylinder Bore</b>	Ø86
<b>Stroke</b>	62 mm
<b>Swept Volume</b>	720 cc
<b>Air Inlet Port Size</b>	Ø30,00
<b>Air Delivery Port Size</b>	Ø16,30
<b>Number of Cylinders</b>	2
<b>Through Drive</b>	Yes
<b>Unloader Port Size</b>	M10x1,5
<b>Water Or Air Cooled</b>	W
<b>Water Inlet Port Size</b>	Ø16,30
<b>Water Delivery Port Size</b>	Ø16,30
<b>Water Cooled Valve Plate</b>	Yes

## Components

172.01.1100	Crankcase	OEM	OE

172.01.1200	Cylinder Head	OEM	OE

172.01.1220	Cylinder Upper Head	OEM	OE
	K018810		

172.01.1230	Cylinder Lower Head	OEM	OE

172.01.1210	Cylinder Head With Plate Kit	OEM	OE

172.01.1300	Plate Kit	OEM	OE
	K018806		

172.01.1400	Connecting Rod	OEM	OE

172.01.1500	Crankshaft	OEM	OE

172.01.1600	Bearing Cover	OEM	OE

172.01.1900	Cap	OEM	OE

408.01.1700	Piston With Rings (STD)	OEM	OE
	SEB22547	42549147 42562096 42534241 42536601	
408.01.1700-Ø86.00 mm			
408.01.1710-Ø86.25 mm			
408.01.1720-Ø86.50 mm			
408.01.1730-Ø86.75 mm			
408.01.1740-Ø87.00 mm			

408.01.1800	Piston Ring Kit (STD)	OEM	OE
408.01.1800-Ø86.00 mm			
408.01.1810-Ø86.25 mm			
408.01.1820-Ø86.50 mm			
408.01.1830-Ø86.75 mm			
408.01.1840-Ø87.00 mm			

172.01.2300 Repair Kit With Bushing

OEM	OE

172.01.2350 Repair Kit w/o Bushing

OEM	OE
K018809	1864986

172.01.2330 Repair Kit

OEM	OE

172.01.1280 Head Repair Kit

OEM	OE

172.01.2100 Gasket & Sealing Kit

OEM	OE

172.01.2200 Valve Kit

OEM	OE

175.01.2500 Unloader Valve Kit

OEM	OE
K034874K50 K159064K50 K049446	1919356 0021304915

102.01.2600 Bushing

OEM	OE
EB00819	1315274 1697278 1697286 5001830853 1697286

110.01.2700 Screw Kit

OEM	OE

172.01.2900 Gear

OEM	OE
	2022259