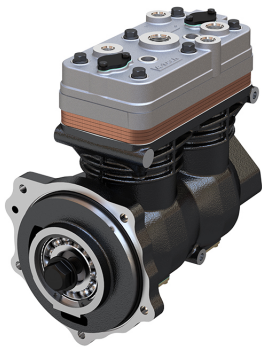


Application: DETROIT DIESEL ENGINES DDC S60 (EGR)

176.01.1000

**176.01.2000
(WITH GEAR)**

OEM	OE
BA-922	23531136
5013262	23533382
5012893	
5012894	
801535	
5012895	

Cylinder Bore	Ø92
Stroke	54
Swept Volume	716
Air Inlet Port Size	M27*2
Air Delivery Port Size	M22*1,5
Number of Cylinders	2
Through Drive	YES
Unloader Port Size	1/8 27 NPT
Water Or Air Cooled	W
Water Inlet Port Size	M18*1,5
Water Delivery Port Size	M18*1,5
Water Cooled Valve Plate	YES

Components

176.01.1100 Crankcase


OEM	OE

176.01.1200 Cylinder Head


OEM	OE

176.01.1220 Cylinder Upper Head

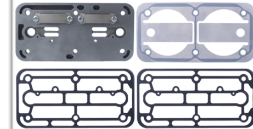

OEM	OE

176.01.1230 Cylinder Lower Head


OEM	OE

176.01.1210 Cylinder Head With Plate Kit


OEM	OE

176.01.1300 Plate Kit


OEM	OE

670.01.1400 Connecting Rod

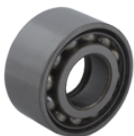

OEM	OE

176.01.1500 Crankshaft


OEM	OE

672.06.100 Safety Valve


OEM	OE
800534	800534

672.01.1103 Bearing


OEM	OE
	40BVV09-1

122.01.1700 Piston With Rings (STD)


OEM	OE
SEB22530	21136690
K006026	7421136690
K012079	51541196008
	51541196009

122.01.1700-Ø92.00 mm
122.01.1710-Ø92.25 mm
122.01.1720-Ø92.50 mm
122.01.1730-Ø92.75 mm
122.01.1740-Ø93.00 mm

122.01.1800 Piston Ring Kit (STD)


OEM	OE

122.01.1800-Ø92.00 mm
122.01.1810-Ø92.25 mm
122.01.1820-Ø92.50 mm
122.01.1830-Ø92.75 mm
122.01.1840-Ø93.00 mm

176.01.2300 Repair Kit With Bushing

	OEM	OE

176.01.2350 Repair Kit w/o Bushing

	OEM	OE

176.01.2330 Repair Kit

	OEM	OE

176.01.2320 Repair Kit

	OEM	OE

176.01.1280 Head Repair Kit

	OEM	OE

176.01.2100 Gasket & Sealing Kit

	OEM	OE

176.01.2200 Valve Kit

	OEM	OE

175.01.2500 Unloader Valve Kit

	OEM	OE
	K034874K50 K159064K50 K049446	1919356 0021304915

175.01.1900 Bottom Cover Kit

	OEM	OE

670.01.2600 Bushing

	OEM	OE
	5010767	5010767

672.01.2900 Gear

	OEM	OE

672.01.2910 Flange For Gear

	OEM	OE

672.01.2950 GearSet

	OEM	OE

110.01.2700 Screw Kit

	OEM	OE

Screw Kit

	OEM	OE

Screw Kit

	OEM	OE

Screw Kit

	OEM	OE

Screw Kit

	OEM	OE