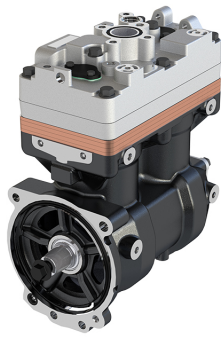


Application: P / G / R / T TRUCK - F / K / N BUS

206.01.1000

**206.01.2000
(WITH GEAR)**

OEM	OE
LK4949	1882222
K009580	1901246
K009580000	
K009580S	
K009580X00	

Cylinder Bore	Ø86
Stroke	62 mm
Swept Volume	720 cc
Air Inlet Port Size	Ø30,00
Air Delivery Port Size	Ø16,30
Number of Cylinders	2
Through Drive	Yes
Unloader Port Size	M10x1,5
Water Or Air Cooled	W
Water Inlet Port Size	Ø16,30
Water Delivery Port Size	Ø16,30
Water Cooled Valve Plate	Yes

Components

172.01.1100	Crankcase	OEM	OE

172.01.1200	Cylinder Head	OEM	OE

172.01.1220	Cylinder Upper Head	OEM	OE
	K018810		

172.01.1230	Cylinder Lower Head	OEM	OE

172.01.1210	Cylinder Head With Plate Kit	OEM	OE

172.01.1300	Plate Kit	OEM	OE
	K018806		

172.01.1400	Connecting Rod	OEM	OE

206.01.1500	Crankshaft	OEM	OE

172.01.1600	Bearing Cover	OEM	OE

172.01.1900	Cap	OEM	OE

408.01.1700	Piston With Rings (STD)	OEM	OE
	SEB22547	42549147 42562096 42534241 42536601	
408.01.1700-Ø86.00 mm 408.01.1710-Ø86.25 mm 408.01.1720-Ø86.50 mm 408.01.1730-Ø86.75 mm 408.01.1740-Ø87.00 mm			

408.01.1800	Piston Ring Kit (STD)	OEM	OE
408.01.1800-Ø86.00 mm 408.01.1810-Ø86.25 mm 408.01.1820-Ø86.50 mm 408.01.1830-Ø86.75 mm 408.01.1840-Ø87.00 mm			

172.01.2300 Repair Kit With Bushing

	OEM	OE

172.01.2350 Repair Kit w/o Bushing

	OEM	OE
	K018809	1864986

172.01.2330 Repair Kit

	OEM	OE

172.01.1280 Head Repair Kit

	OEM	OE

172.01.2100 Gasket & Sealing Kit

	OEM	OE

172.01.2200 Valve Kit

	OEM	OE

175.01.2500 Unloader Valve Kit

	OEM	OE
	K034874K50 K159064K50 K049446	1919356 0021304915

102.01.2600 Bushing

	OEM	OE
	EB00819	1315274 1697278 1697286 5001830853 1697286

206.01.2900 Gear

	OEM	OE
		1511601