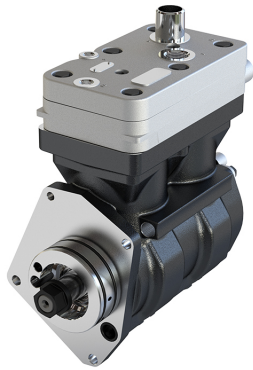


Application: AXOR / OM457

319.01.1000

**319.01.2000
(WITH GEAR)**

OEM	OE
9115530030	457 130 15 15
9115530010	457 130 20 15

Cylinder Bore	Ø85
Stroke	56 mm
Swept Volume	636 cc
Air Inlet Port Size	Ø30
Air Delivery Port Size	M26x1,5
Number of Cylinders	2
Through Drive	Yes
Unloader Port Size	M12x1.5
Water Or Air Cooled	W
Water Inlet Port Size	M16x1.5
Water Delivery Port Size	M14x1.5
Water Cooled Valve Plate	Yes

Components

319.01.1100	Crankcase	OEM	OE

318.01.1200	Cylinder Head	OEM	OE
		9115539202 9115536562	0001315219

318.01.1220	Cylinder Upper Head	OEM	OE

318.01.1230	Cylinder Lower Head	OEM	OE

283.01.1400	Connecting Rod	OEM	OE
		9111457382	0001312517 0001312917

311.01.1500	Crankshaft	OEM	OE
		9115536944	

283.01.1600	Bearing Cover	OEM	OE
		4111476034	0001312932

293.01.1580	Nut For Crankshaft	OEM	OE
		8103410034	0029906650

283.01.1610	Bushing	OEM	OE
		9115532044	

136.01.1900	Cap	OEM	OE
		8950735894	1304881 3094835 11712508 0001312321

136.01.1700	Piston With Rings (STD)	OEM	OE
		9115016242 9115016252 912006272	1283781 1698686 0001303417 0001305317 81541196040
136.01.1700-Ø85.00 mm 136.01.1710-Ø85.25 mm 136.01.1720-Ø85.50 mm 136.01.1730-Ø85.75 mm 136.01.1740-Ø86.00 mm			

132.01.1800	Piston Ring Kit (STD)	OEM	OE
		9115019202 9118019202	3094621 0011311111
132.01.1800-Ø85.00 mm 132.01.1810-Ø85.25 mm 132.01.1820-Ø85.50 mm 132.01.1830-Ø85.75 mm 132.01.1840-Ø86.00 mm			

318.01.2350 Repair Kit w/o Bushing

OEM	OE
9115530002	

318.01.2330 Repair Kit

OEM	OE

296.01.1280 Head Repair Kit

OEM	OE

318.01.2100 Gasket & Sealing Kit

OEM	OE

296.01.2200 Valve Kit

OEM	OE

138.01.2500 Unloader Valve Kit

OEM	OE

295.01.2106 Gasket for Crankcase

OEM	OE
9121101404	4571310180

310.01.2900 Gear

OEM	OE
8959051014	4571320605

296.01.2700 Screw Kit

OEM	OE