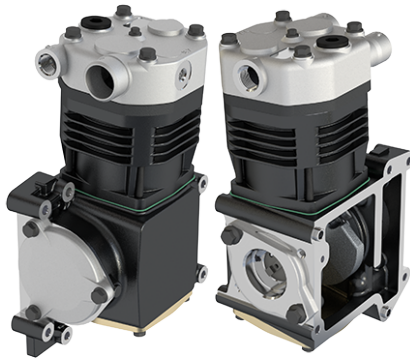


Application: O 345 BUS


OEM	OE
	447 130 28 15

Cylinder Bore	Ø100
Stroke	48 mm
Swept Volume	377 cc
Air Inlet Port Size	Ø40
Air Delivery Port Size	M26x1.5
Number of Cylinders	1
Through Drive	Yes
Unloader Port Size	-
Water Or Air Cooled	W
Water Inlet Port Size	M22x1.5
Water Delivery Port Size	M14x1.5
Water Cooled Valve Plate	Yes

Components

334.01.1100	Crankcase				
	<table border="1"> <thead> <tr> <th>OEM</th> <th>OE</th> </tr> </thead> <tbody> <tr> <td></td> <td>4471310315 4471310330</td> </tr> </tbody> </table>	OEM	OE		4471310315 4471310330
OEM	OE				
	4471310315 4471310330				

335.01.1200	Cylinder Head				
	<table border="1"> <thead> <tr> <th>OEM</th> <th>OE</th> </tr> </thead> <tbody> <tr> <td></td> <td>4421310519</td> </tr> </tbody> </table>	OEM	OE		4421310519
OEM	OE				
	4421310519				


335.01.1210	Cylinder Head With Plate Kit				
	<table border="1"> <thead> <tr> <th>OEM</th> <th>OE</th> </tr> </thead> <tbody> <tr> <td></td> <td>4421317119</td> </tr> </tbody> </table>	OEM	OE		4421317119
OEM	OE				
	4421317119				

335.01.1300	Plate Kit				
	<table border="1"> <thead> <tr> <th>OEM</th> <th>OE</th> </tr> </thead> <tbody> <tr> <td></td> <td>4421301120</td> </tr> </tbody> </table>	OEM	OE		4421301120
OEM	OE				
	4421301120				

334.01.1400	Connecting Rod				
	<table border="1"> <thead> <tr> <th>OEM</th> <th>OE</th> </tr> </thead> <tbody> <tr> <td></td> <td>4421310017 4421310217 5411310117</td> </tr> </tbody> </table>	OEM	OE		4421310017 4421310217 5411310117
OEM	OE				
	4421310017 4421310217 5411310117				

334.01.1420	Connecting Rod				
	<table border="1"> <thead> <tr> <th>OEM</th> <th>OE</th> </tr> </thead> <tbody> <tr> <td></td> <td></td> </tr> </tbody> </table>	OEM	OE		
OEM	OE				


334.01.1500	Crankshaft				
	<table border="1"> <thead> <tr> <th>OEM</th> <th>OE</th> </tr> </thead> <tbody> <tr> <td></td> <td>4471300014</td> </tr> </tbody> </table>	OEM	OE		4471300014
OEM	OE				
	4471300014				

318.01.1502	Screw for crankshaft				
	<table border="1"> <thead> <tr> <th>OEM</th> <th>OE</th> </tr> </thead> <tbody> <tr> <td></td> <td>4039900610 51900200131</td> </tr> </tbody> </table>	OEM	OE		4039900610 51900200131
OEM	OE				
	4039900610 51900200131				

334.01.2600	Bushing				
	<table border="1"> <thead> <tr> <th>OEM</th> <th>OE</th> </tr> </thead> <tbody> <tr> <td></td> <td>79098371 0001314250 4421310050</td> </tr> </tbody> </table>	OEM	OE		79098371 0001314250 4421310050
OEM	OE				
	79098371 0001314250 4421310050				

334.01.2610	Bushing				
	<table border="1"> <thead> <tr> <th>OEM</th> <th>OE</th> </tr> </thead> <tbody> <tr> <td></td> <td>4031311342</td> </tr> </tbody> </table>	OEM	OE		4031311342
OEM	OE				
	4031311342				

276.01.1700	Piston With Rings (STD)				
	<table border="1"> <thead> <tr> <th>OEM</th> <th>OE</th> </tr> </thead> <tbody> <tr> <td></td> <td>51541196001</td> </tr> </tbody> </table> <p>276.01.1700-Ø100.00 mm 276.01.1710-Ø100.25 mm 276.01.1720-Ø100.50 mm 276.01.1730-Ø100.75 mm 276.01.1740-Ø101.00 mm 276.01.1750-Ø100.00 mm 276.01.1760-Ø100.25 mm 276.01.1770-Ø100.50 mm</p>	OEM	OE		51541196001
OEM	OE				
	51541196001				

276.01.1800	Piston Ring Kit (STD)				
	<table border="1"> <thead> <tr> <th>OEM</th> <th>OE</th> </tr> </thead> <tbody> <tr> <td></td> <td>5010323075 0011310111 5010323074 51541030001</td> </tr> </tbody> </table> <p>276.01.1800-Ø100.00 mm 276.01.1810-Ø100.25 mm 276.01.1820-Ø100.50 mm 276.01.1830-Ø100.75 mm 276.01.1840-Ø101.00 mm 276.01.1850-Ø100.00 mm 276.01.1860-Ø100.25 mm 276.01.1870-Ø100.50 mm</p>	OEM	OE		5010323075 0011310111 5010323074 51541030001
OEM	OE				
	5010323075 0011310111 5010323074 51541030001				

335.01.2300 Repair Kit With Bushing	OEM		OE	

335.01.2350 Repair Kit w/o Bushing	OEM		OE	

335.01.2320 Repair Kit	OEM		OE	

335.01.2100 Gasket & Sealing Kit	OEM		OE	

335.01.2200 Valve Kit	OEM		OE	

276.01.1750 Piston With Rings (STD)	OEM		OE	
	<p>276.01.1750-Ø100.00 mm</p>			

276.01.1850 Piston Ring Kit (STD)	OEM		OE	
	<p>276.01.1850-Ø100.00 mm</p>			

335.01.2800 Cylinder Liner	OEM		OE	

335.01.2810 Cylinder Liner Kit	OEM		OE	
	<p>4421300108</p>			

335.01.2850 Cylinder Block & Piston w Rings	OEM		OE	
	<p>4421300108</p>			

334.01.2900 Gear	OEM		OE	
	<p>4471320205</p>			

334.01.3600 Cover Square	OEM		OE	
	<p>4421310021 51014020033</p>			

334.01.3700 Cover Triangle	OEM		OE	
	<p>4071310021 51541110001</p>			

334.01.2700 Screw Kit	OEM		OE	
	<p>51900200333</p>			

334.01.1600 Bearing Cover	OEM		OE	
	<p>4031300145 4421300145 4421300445</p>			

334.01.1620 Bearing Cover	OEM		OE	
	<p>4031300145 4421300145 4421300445</p>			

	OEM		OE	

	OEM		OE	