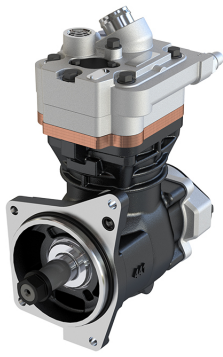


**Application:** OM472 / DD15

**441.01.1000**

**441.01.2000  
(WITH GEAR)**

OEM	OE
BA-921	472 130 08 15
BA-921	472 130 05 15
	472 130 08 15
	472 130 05 15

<b>Cylinder Bore</b>	Ø92
<b>Stroke</b>	54 mm
<b>Swept Volume</b>	360 cc
<b>Air Inlet Port Size</b>	Ø34.5
<b>Air Delivery Port Size</b>	M26x1.5
<b>Number of Cylinders</b>	1
<b>Through Drive</b>	Yes
<b>Unloader Port Size</b>	M10x1
<b>Water Or Air Cooled</b>	W
<b>Water Inlet Port Size</b>	M18x1.5
<b>Water Delivery Port Size</b>	M18x1.5
<b>Water Cooled Valve Plate</b>	Yes

## Components

441.01.1100	Crankcase	OEM	OE

441.01.1200	Cylinder Head	OEM	OE

441.01.1220	Cylinder Upper Head	OEM	OE

441.01.1230	Cylinder Lower Head	OEM	OE

441.01.1210	Cylinder Head With Plate Kit	OEM	OE

441.01.1300	Plate Kit	OEM	OE
			K011811

409.01.1400	Connecting Rod	OEM	OE
		SEB22464	85104324

293.01.1580	Nut For Crankshaft	OEM	OE
		8103410034	0029906650

441.01.1510	Adapter	OEM	OE

441.01.2900	Gear	OEM	OE
			4721320305

122.01.1700	Piston With Rings (STD)	OEM	OE
		SEB22530 K006026 K012079	21136690 7421136690 51541196008 51541196009
122.01.1700-Ø92.00 mm 122.01.1710-Ø92.25 mm 122.01.1720-Ø92.50 mm 122.01.1730-Ø92.75 mm 122.01.1740-Ø93.00 mm			

122.01.1800	Piston Ring Kit (STD)	OEM	OE
122.01.1800-Ø92.00 mm 122.01.1810-Ø92.25 mm 122.01.1820-Ø92.50 mm 122.01.1830-Ø92.75 mm 122.01.1840-Ø93.00 mm			

441.01.2300 Repair Kit With Bushing

OEM	OE

441.01.2350 Repair Kit w/o Bushing

OEM	OE

441.01.2330 Repair Kit

OEM	OE

441.01.2320 Repair Kit

OEM	OE
K011815	

441.01.1280 Head Repair Kit

OEM	OE

441.01.2100 Gasket & Sealing Kit

OEM	OE

441.01.2200 Valve Kit

OEM	OE

670.01.2500 Unloader Valve Kit

OEM	OE
K034874K50	

441.01.1500 Crankshaft

OEM	OE

441.01.1600 Bearing Cover

OEM	OE

172.01.1900 Cap

OEM	OE

441.01.2600 Bushing

OEM	OE

441.01.2700 Screw Kit

OEM	OE

OEM	OE

OEM	OE

OEM	OE

OEM	OE

OEM	OE