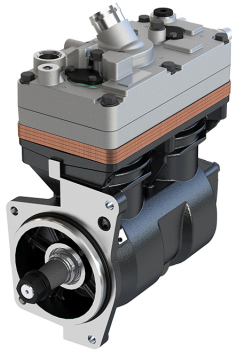


**Application:** AROCS EURO6

**486.01.2000  
(WITH GEAR)**

OEM	OE
LK4972	471 130 72 15
K066254N01	471 130 60 15
K066254N00	471 130 24 15
K057862N00	471 130 19 15
K057862N01	001 130 52 15
	001 130 55 15
	001 130 74 15
	001 130 82 15
	002 130 62 15
	002 130 69 15
	471 130 37 15

<b>Cylinder Bore</b>	Ø86
<b>Stroke</b>	56 mm
<b>Swept Volume</b>	650 cc
<b>Air Inlet Port Size</b>	Ø34.5
<b>Air Delivery Port Size</b>	M26x1.5
<b>Number of Cylinders</b>	2
<b>Through Drive</b>	Yes
<b>Unloader Port Size</b>	M10x1
<b>Water Or Air Cooled</b>	W
<b>Water Inlet Port Size</b>	M18x1.5
<b>Water Delivery Port Size</b>	M18x1.5
<b>Water Cooled Valve Plate</b>	Yes

## Components

486.01.1100	Crankcase	OEM	OE

486.01.1200	Cylinder Head	OEM	OE

486.01.1220	Cylinder Upper Head	OEM	OE

440.01.1230	Cylinder Lower Head	OEM	OE

486.01.1210	Cylinder Head With Plate Kit	OEM	OE
	K091889K50 K091890K50		

486.01.1250	Cylinder Head Kit	OEM	OE
	K091889K50 K091890K50	0021304715 0021304815	

440.01.1300	Plate Kit	OEM	OE

440.01.1400	Connecting Rod	OEM	OE

486.01.1500	Crankshaft	OEM	OE

486.01.1600	Bearing Cover	OEM	OE

408.01.1700	Piston With Rings (STD)	OEM	OE
	SEB22547	42549147 42562096 42534241 42536601	
408.01.1700-Ø86.00 mm			
408.01.1710-Ø86.25 mm			
408.01.1720-Ø86.50 mm			
408.01.1730-Ø86.75 mm			
408.01.1740-Ø87.00 mm			

408.01.1800	Piston Ring Kit (STD)	OEM	OE
408.01.1800-Ø86.00 mm			
408.01.1810-Ø86.25 mm			
408.01.1820-Ø86.50 mm			
408.01.1830-Ø86.75 mm			
408.01.1840-Ø87.00 mm			

440.01.2300 Repair Kit With Bushing

OEM	OE

440.01.2350 Repair Kit w/o Bushing

OEM	OE

440.01.2330 Repair Kit

OEM	OE

440.01.1280 Head Repair Kit

OEM	OE

440.01.2100 Gasket & Sealing Kit

OEM	OE

440.01.2200 Valve Kit

OEM	OE

175.01.2500 Unloader Valve Kit

OEM	OE
 K034874K50 K159064K50 K049446	 1919356 0021304915

441.01.2900 Gear

OEM	OE
	4721320305

102.01.2600 Bushing

OEM	OE
	 EB00819 1315274 1697278 1697286 5001830853 1697286

110.01.2700 Screw Kit

OEM	OE

172.01.1900 Cap

OEM	OE

OEM	OE

OEM	OE

OEM	OE