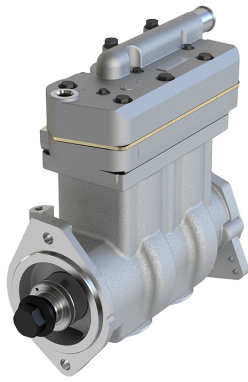


Application: CUMMINS ISL / PROCITY (18 m.) / BELDE (18 m.)

619.01.1000

**619.01.2000
(WITH GEAR)**

OEM	OE
9115165000	3976374
9115165000	3976374

Cylinder Bore	Ø75
Stroke	56
Swept Volume	495
Air Inlet Port Size	Ø25
Air Delivery Port Size	M27*2
Number of Cylinders	2
Through Drive	YES
Unloader Port Size	M10*1
Water Or Air Cooled	W
Water Inlet Port Size	3/4-16UNF
Water Delivery Port Size	3/4-16UNF
Water Cooled Valve Plate	YES

Components

619.01.1100	Crankcase	OEM	OE

619.01.1200	Cylinder Head	OEM	OE

619.01.1220	Cylinder Upper Head	OEM	OE

619.01.1230	Cylinder Lower Head	OEM	OE

619.01.1300	Coolant Plate	OEM	OE

405.01.1400	Connecting Rod	OEM	OE
		9111457372	

660.01.1500	Crankshaft	OEM	OE

602.01.1502	Screw for Crankshaft	OEM	OE

602.01.1510	Pump Adapter	OEM	OE
		9119022304	4089677

602.01.1600	Bearing Cover	OEM	OE
		9111539252	4089222 4089222

218.01.1700	Piston With Rings (STD)	OEM	OE
		4111416232	513860 8121570 9982648 5000816053 0001311607 08121570 09982648 513860 81541190004 81541196039
	218.01.1700-Ø75.00 mm		
	218.01.1710-Ø75.25 mm		
	218.01.1720-Ø75.50 mm		
	218.01.1730-Ø75.75 mm		
	218.01.1740-Ø76.00 mm		

102.01.1800	Piston Ring Kit (STD)	OEM	OE
		4111416232 1801770061 8956710204 4111419202 4111419202	513839 513843 1283826 1391384 1391385 1396835 3090388 0011310711
	102.01.1800-Ø75.00 mm		
	102.01.1810-Ø75.25 mm		
	102.01.1820-Ø75.50 mm		
	102.01.1830-Ø75.75 mm		
	102.01.1840-Ø76.00 mm		

619.01.2350 Repair Kit w/o Bushing

	OEM	OE

619.01.2310 Repair Kit With Coolant Pla

	OEM	OE

619.01.2330 Repair Kit

	OEM	OE

619.01.1280 Head Repair Kit

	OEM	OE

619.01.1900 Bottom Cover

	OEM	OE

619.01.2100 Gasket & Sealing Kit

	OEM	OE

619.01.2200 Valve Kit

	OEM	OE

139.01.2500 Unloader Valve Kit

	OEM	OE

603.01.2900 Gear

	OEM	OE
		3940239 3942497

235.01.1103 Bearing

	OEM	OE

619.01.2700 Screw Kit

	OEM	OE

	OEM	OE

	OEM	OE

	OEM	OE