

**Application:** DETROIT DIESEL ENGINE DDC S60 (Pre-2007)


OEM	OE
BA-921	23535534
5018485	23532823
5018523	
5018522	
5018516	
5018514	
5016799	
5016614	
5016613	
5016612	
5014382	
5012794	
5010824	
5010823	
5010822	
802767	
801287	

<b>Cylinder Bore</b>	Ø92
<b>Stroke</b>	54
<b>Swept Volume</b>	358
<b>Air Inlet Port Size</b>	M27*2
<b>Air Delivery Port Size</b>	M22*1,5
<b>Number of Cylinders</b>	1
<b>Through Drive</b>	YES
<b>Unloader Port Size</b>	1/8 27 NPT
<b>Water Or Air Cooled</b>	W
<b>Water Inlet Port Size</b>	M18*1,5
<b>Water Delivery Port Size</b>	M18*1,5
<b>Water Cooled Valve Plate</b>	YES

## Components

672.01.1100	Crankcase	OEM	OE
			5010119

672.01.1200	Cylinder Head	OEM	OE

672.01.1220	Cylinder Upper Head	OEM	OE

672.01.1230	Cylinder Lower Head	OEM	OE

672.01.1210	Cylinder Head With Plate Kit	OEM	OE

670.01.1300	Plate Kit	OEM	OE

670.01.1400	Connecting Rod	OEM	OE

672.01.1500	Crankshaft	OEM	OE

670.01.1502	Screw for Crankshaft	OEM	OE

672.01.1510	Pump Adapter	OEM	OE

120.01.1900	Bottom Cover Kit	OEM	OE

672.01.2600	Bushing	OEM	OE
			AK2500350R

**122.01.1700 Piston With Rings (STD)**


122.01.1700-Ø92.00 mm  
 122.01.1710-Ø92.25 mm  
 122.01.1720-Ø92.50 mm  
 122.01.1730-Ø92.75 mm  
 122.01.1740-Ø93.00 mm

**OEM**

SEB22530  
 K006026  
 K012079

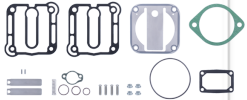
**OE**

21136690  
 7421136690  
 51541196008  
 51541196009

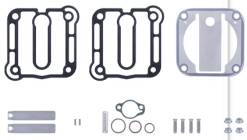
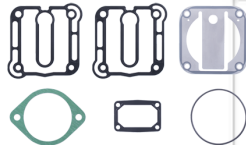
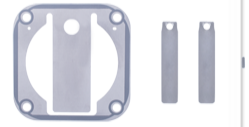
**122.01.1800 Piston Ring Kit (STD)**


122.01.1800-Ø92.00 mm  
 122.01.1810-Ø92.25 mm  
 122.01.1820-Ø92.50 mm  
 122.01.1830-Ø92.75 mm  
 122.01.1840-Ø93.00 mm

**OEM**
**OE**
**672.01.2300 Repair Kit With Bushing**

**OEM**
**OE**
**670.01.2350 Repair Kit w/o Bushing**

**OEM**
**OE**
**670.01.2330 Repair Kit**

**OEM**
**OE**
**670.01.2320 Repair Kit**

**OEM**
**OE**
**670.01.1280 Head Repair Kit**

**OEM**
**OE**
**670.01.2100 Gasket & Sealing Kit**

**OEM**
**OE**
**265.01.2200 Valve Kit**

**OEM**
**OE**
**670.01.2500 Unloader Valve Kit**

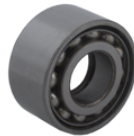
**OEM**
**OE**

K034874K50

**672.01.2900 Gear**

**OEM**
**OE**
**672.01.2910 Flange For Gear**

**OEM**
**OE**
**672.01.2950 GearSet**

**OEM**
**OE**
**672.01.1103 Bearing**

**OEM**
**OE**

40BVV09-1

**672.06.100 Safety Valve**

**OEM**
**OE**

800534

800534

**130.01.2700 Screw Kit**

**OEM**
**OE**
**OEM**
**OE**
**OEM**
**OE**