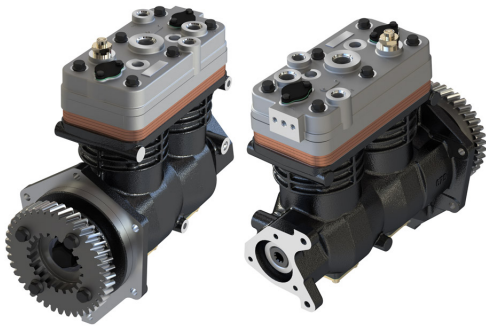


Application: DETROIT DIESEL ENGINES DDC S50 (Pre-EGR)


OEM	OE
BA-922	6319090
5013695	
5011616	
5013693	
5013694	
801732	
5014542	
K068950	

Cylinder Bore	Ø92
Stroke	54
Swept Volume	716
Air Inlet Port Size	1 3/16"12UN-2B
Air Delivery Port Size	7/8"14UNF-2B
Number of Cylinders	2
Through Drive	YES
Unloader Port Size	1/8 27 NPT
Water Or Air Cooled	W
Water Inlet Port Size	3/4"16UNF-2B
Water Delivery Port Size	3/4"16UNF-2B
Water Cooled Valve Plate	YES

Components

675.01.1100	Crankcase	OEM	OE

675.01.1200	Cylinder Head	OEM	OE

675.01.1220	Cylinder Upper Head	OEM	OE

176.01.1230	Cylinder Lower Head	OEM	OE

675.01.1210	Cylinder Head With Plate Kit	OEM	OE
			K033300

176.01.1300	Plate Kit	OEM	OE

670.01.1400	Connecting Rod	OEM	OE

176.01.1500	Crankshaft	OEM	OE

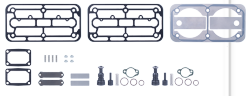
122.01.1700	Piston With Rings (STD)	OEM	OE
		SEB22530 K006026 K012079	21136690 7421136690 51541196008 51541196009
122.01.1700-Ø92.00 mm 122.01.1710-Ø92.25 mm 122.01.1720-Ø92.50 mm 122.01.1730-Ø92.75 mm 122.01.1740-Ø93.00 mm			

122.01.1800	Piston Ring Kit (STD)	OEM	OE
122.01.1800-Ø92.00 mm 122.01.1810-Ø92.25 mm 122.01.1820-Ø92.50 mm 122.01.1830-Ø92.75 mm 122.01.1840-Ø93.00 mm			

675.01.2300	Repair Kit With Bushing	OEM	OE

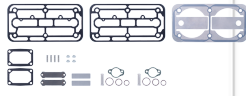
675.01.2350	Repair Kit w/o Bushing	OEM	OE

675.01.2330 Repair Kit



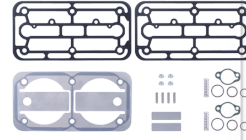
OEM	OE

675.01.2320 Repair Kit



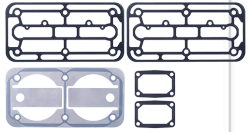
OEM	OE

176.01.1280 Head Repair Kit



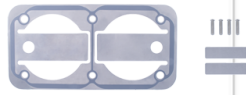
OEM	OE

675.01.2100 Gasket & Sealing Kit



OEM	OE

176.01.2200 Valve Kit



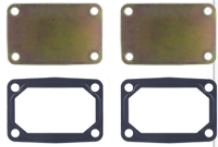
OEM	OE

175.01.2500 Unloader Valve Kit



OEM	OE
K034874K50 K159064K50 K049446	1919356 0021304915

175.01.1900 Bottom Cover Kit



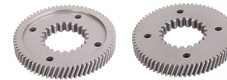
OEM	OE

670.01.2600 Bushing



OEM	OE
5010767	5010767

697.01.2900 Gear



OEM	OE
	8929311

672.01.2910 Flange For Gear



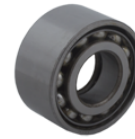
OEM	OE

697.01.2950 GearSet



OEM	OE

672.01.1103 Bearing



OEM	OE
	40BVV09-1