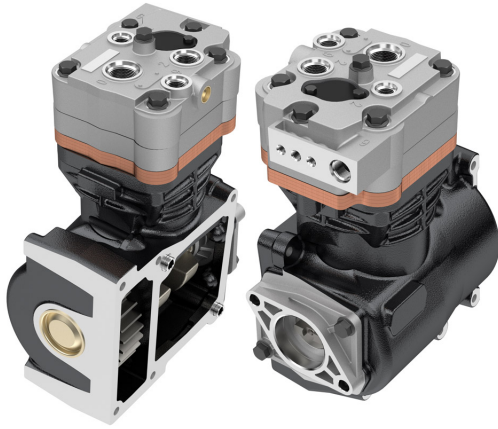


**Application:** NAVISTAR ENGINE MAXXFORCE 11L/13L


OEM	OE
BA-921CLOSEDROOM K042162 K044642SC K075155	2514355C1 3709920C92

<b>Cylinder Bore</b>	Ø92
<b>Stroke</b>	54
<b>Swept Volume</b>	358
<b>Air Inlet Port Size</b>	M27*2
<b>Air Delivery Port Size</b>	M22*1,5 / M16*1,5
<b>Number of Cylinders</b>	1
<b>Through Drive</b>	YES
<b>Unloader Port Size</b>	1/8 27 NPT
<b>Water Or Air Cooled</b>	W
<b>Water Inlet Port Size</b>	M18*1,5
<b>Water Delivery Port Size</b>	M18*1,5
<b>Water Cooled Valve Plate</b>	YES

## Components

677.01.1100	Crankcase	OEM	OE

673.01.1200	Cylinder Head	OEM	OE

673.01.1220	Cylinder Upper Head	OEM	OE

673.01.1230	Cylinder Lower Head	OEM	OE

673.01.1210	Cylinder Head With Plate Kit	OEM	OE

441.01.1300	Plate Kit	OEM	OE
		K011811	

409.01.1400	Connecting Rod	OEM	OE
		SEB22464	85104324

265.01.1500	Crankshaft	OEM	OE

265.01.1502	Screw for Crankshaft	OEM	OE

265.01.1530	Screw for Crankshaft	OEM	OE

122.01.1700	Piston With Rings (STD)	OEM	OE
		SEB22530 K006026 K012079	21136690 7421136690 51541196008 51541196009
122.01.1700-Ø92.00 mm 122.01.1710-Ø92.25 mm 122.01.1720-Ø92.50 mm 122.01.1730-Ø92.75 mm 122.01.1740-Ø93.00 mm			

122.01.1800	Piston Ring Kit (STD)	OEM	OE
122.01.1800-Ø92.00 mm 122.01.1810-Ø92.25 mm 122.01.1820-Ø92.50 mm 122.01.1830-Ø92.75 mm 122.01.1840-Ø93.00 mm			

677.01.2300 Repair Kit With Bushing

	OEM	OE

677.01.2350 Repair Kit w/o Bushing

	OEM	OE

677.01.2330 Repair Kit

	OEM	OE

677.01.2320 Repair Kit

	OEM	OE

441.01.1280 Head Repair Kit

	OEM	OE

677.01.2100 Gasket & Sealing Kit

	OEM	OE

441.01.2200 Valve Kit

	OEM	OE

670.01.2500 Unloader Valve Kit

	OEM	OE
	K034874K50	

265.01.1600 Bearing Cover

	OEM	OE

265.01.1610 Cap

	OEM	OE

102.01.2600 Bushing

	OEM	OE
	EB00819	1315274 1697278 1697286 5001830853 1697286

265.01.2900 Gear

	OEM	OE
	K017357 K018090 K017296	51542100207 51542100208 51542106045

441.01.2700 Screw Kit

	OEM	OE

Screw Kit

	OEM	OE

Screw Kit

	OEM	OE

	OEM	OE

	OEM	OE

	OEM	OE