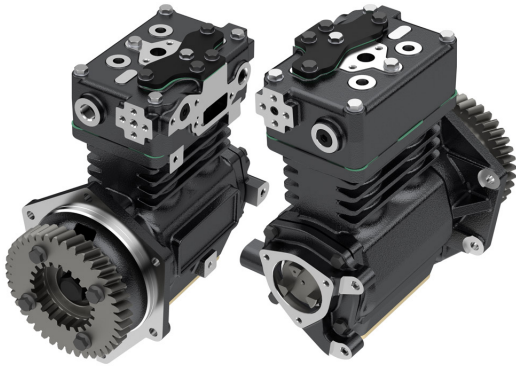


Application: DETROIT DIESEL ENGINES DDC 60 SERIES


OEM	OE
Tu-Flo550 5013830	23534455

Cylinder Bore	Ø70,64
Stroke	38
Swept Volume	298
Air Inlet Port Size	-
Air Delivery Port Size	1/2'-14 NPTF
Number of Cylinders	2
Through Drive	Yes
Unloader Port Size	1/8'- 27 NPTF
Water Or Air Cooled	W
Water Inlet Port Size	1/2'-14 NPTF
Water Delivery Port Size	1/2'-14 NPTF
Water Cooled Valve Plate	Yes

Components

697.01.1100	Crankcase	OEM	OE

712.01.1200	Cylinder Head	OEM	OE
		107082	9P920283

712.01.1400	Connecting Rod	OEM	OE
		108841	

712.01.1410	Big end Bearing	OEM	OE
		107651	

712.01.1470	Connecting Rod & Piston Rep	OEM	OE
		108843	

712.01.1500	Crankshaft	OEM	OE

670.01.1502	Screw for Crankshaft	OEM	OE

697.01.1600	Bearing Cover	OEM	OE

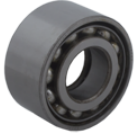
712.01.1700	Piston With Rings (STD)	OEM	OE
712.01.1700-Ø70.64 mm 712.01.1710-Ø70.89 mm 712.01.1720-Ø71.14 mm 712.01.1730-Ø71.39 mm 712.01.1740-Ø71.64 mm			

712.01.1800	Piston Ring Kit (STD)	OEM	OE
		5005361 107639	
712.01.1800-Ø70.64 mm 712.01.1810-Ø70.89 mm 712.01.1820-Ø71.14 mm 712.01.1830-Ø71.39 mm 712.01.1840-Ø71.64 mm			

697.01.2900	Gear	OEM	OE
			8929311

672.01.2910	Flange For Gear	OEM	OE

672.01.1103 Bearing



OEM

OE

40BVV09-1

712.01.2350 Repair Kit w/o Bushing



OEM

OE

107516

107516

2K200296

697.01.2950 GearSet



OEM

OE

OEM

OE

OEM

OE

OEM

OE

OEM

OE

OEM

OE

OEM

OE

OEM

OE

OEM

OE

OEM

OE

OEM

OE

OEM

OE

OEM

OE

OEM

OE

OEM

OE

OEM

OE