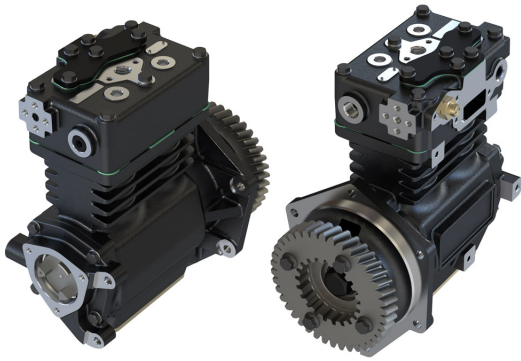


**Application:** DETROIT DIESEL ENGINES DDC 60 SERIES


OEM	OE
Tu-Flo750 5013831 K053744	23534461

<b>Air Delivery Port Size</b>	1/2"-14 NPTF
<b>Number of Cylinders</b>	2
<b>Through Drive</b>	Yes
<b>Unloader Port Size</b>	1/8"- 27 NPTF
<b>Water Or Air Cooled</b>	W
<b>Water Inlet Port Size</b>	1/2"-14 NPTF
<b>Water Delivery Port Size</b>	1/2"-14 NPTF
<b>Water Cooled Valve Plate</b>	Yes
<b>Cylinder Bore</b>	Ø70,64
<b>Stroke</b>	48
<b>Swept Volume</b>	376
<b>Air Inlet Port Size</b>	-

## Components

697.01.1100	Crankcase	OEM	OE

712.01.1200	Cylinder Head	OEM	OE
		107082	9P920283

712.01.1400	Connecting Rod	OEM	OE
		108841	

712.01.1410	Big end Bearing	OEM	OE
		107651	

697.01.1470	Connecting Rod & Piston Rep	OEM	OE

697.01.1500	Crankshaft	OEM	OE

670.01.1502	Screw for Crankshaft	OEM	OE

697.01.1600	Bearing Cover	OEM	OE

697.01.1700	Piston With Rings (STD)	OEM	OE
697.01.1700-Ø70.64 mm 697.01.1710-Ø70.89 mm 697.01.1720-Ø71.14 mm 697.01.1730-Ø71.39 mm 697.01.1740-Ø71.64 mm			

697.01.1701	Piston Ring Kit (STD)	OEM	OE
697.01.1701-Ø70.64 mm 697.01.1711-Ø70.89 mm 697.01.1721-Ø71.14 mm 697.01.1731-Ø71.39 mm 697.01.1741-Ø71.64 mm			

712.01.1800	Piston Ring Kit (STD)	OEM	OE
		5005361 107639	
712.01.1800-Ø70.64 mm 712.01.1810-Ø70.89 mm 712.01.1820-Ø71.14 mm 712.01.1830-Ø71.39 mm 712.01.1840-Ø71.64 mm			

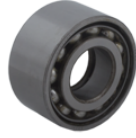
697.01.2900	Gear	OEM	OE
			8929311

672.01.2910 Flange For Gear



OEM	OE

672.01.1103 Bearing



OEM	OE
	40BVV09-1

712.01.2350 Repair Kit w/o Bushing



OEM	OE
107516	107516 2K200296

697.01.2950 GearSet



OEM	OE

TT  
TT

OEM	OE

OEM	OE

OEM	OE

OEM	OE

OEM	OE

OEM	OE

OEM	OE

OEM	OE

OEM	OE

OEM	OE

OEM	OE

OEM	OE