

**Application: DETROIT DIESEL**


OEM	OE
Tu-Flo550	X52636200030
5003150	5241310001
5003153	
800315	
K098026	
K099584	
K099585	

<b>Cylinder Bore</b>	Ø70,64
<b>Stroke</b>	38
<b>Swept Volume</b>	298
<b>Air Inlet Port Size</b>	-
<b>Air Delivery Port Size</b>	1/2'-14 NPTF
<b>Number of Cylinders</b>	2
<b>Through Drive</b>	Yes
<b>Unloader Port Size</b>	1/8'- 27 NPTF
<b>Water Or Air Cooled</b>	W
<b>Water Inlet Port Size</b>	1/2'-14 NPTF
<b>Water Delivery Port Size</b>	1/2'-14 NPTF
<b>Water Cooled Valve Plate</b>	Yes

## Components

697.01.1100	Crankcase	OEM	OE

712.01.1200	Cylinder Head	OEM	OE
		107082	9P920283

712.01.1400	Connecting Rod	OEM	OE
		108841	

712.01.1430	Connecting Rod with Big end	OEM	OE

712.01.1410	Big end Bearing	OEM	OE
		107651	

712.01.1470	Connecting Rod & Piston Rep	OEM	OE
		108843	

727.01.1500	Crankshaft	OEM	OE

670.01.1502	Screw for Crankshaft	OEM	OE

697.01.1600	Bearing Cover	OEM	OE

697.01.1900	Bottom Cover Kit	OEM	OE

712.01.1700	Piston With Rings (STD)	OEM	OE
712.01.1700-Ø70.64 mm 712.01.1710-Ø70.89 mm 712.01.1720-Ø71.14 mm 712.01.1730-Ø71.39 mm 712.01.1740-Ø71.64 mm			

712.01.1800	Piston Ring Kit (STD)	OEM	OE
		5005361 107639	
712.01.1800-Ø70.64 mm 712.01.1810-Ø70.89 mm 712.01.1820-Ø71.14 mm 712.01.1830-Ø71.39 mm 712.01.1840-Ø71.64 mm			

712.01.2350 Repair Kit w/o Bushing



OEM	OE
107516	107516 2K200296

672.01.2600 Bushing



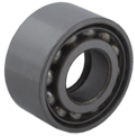
OEM	OE
	AK2500350R

697.01.2700 Screw Kit



OEM	OE

672.01.1103 Bearing



OEM	OE
	40BVV09-1

OEM	OE

OEM	OE

OEM	OE

OEM	OE

OEM	OE

OEM	OE

OEM	OE

OEM	OE

OEM	OE

OEM	OE

OEM	OE

OEM	OE

OEM	OE

OEM	OE