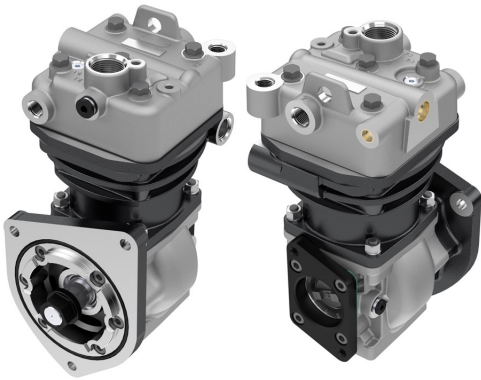


**389.01.1000**

**Compressor (Single Cylinder)**

**Application:** DEUTZ 1013, CARGO 3227



OEM	OE
LK3965	YCT2875AA
K021890	01180656
II33163	

<b>Cylinder Bore</b>	Ø88
<b>Stroke</b>	50 mm
<b>Swept Volume</b>	300 cc
<b>Air Inlet Port Size</b>	M30*1,5
<b>Air Delivery Port Size</b>	M18*1,5
<b>Number of Cylinders</b>	1
<b>Through Drive</b>	YES
<b>Unloader Port Size</b>	M22*1,5
<b>Water Or Air Cooled</b>	W
<b>Water Inlet Port Size</b>	M16*1,5
<b>Water Delivery Port Size</b>	M16*1,5
<b>Water Cooled Valve Plate</b>	YES

## Components

**389.01.1100 Crankcase**

	OEM	OE
	I80411	


**389.01.1200 Cylinder Head**

	OEM	OE
		


**389.01.1210 Cylinder Head With Plate Kit**

	OEM	OE
		

**130.01.1300 Plate Kit**

	OEM	OE
	II14777004	1699825


**260.01.1400 Connecting Rod**

	OEM	OE
	I60599	81541060013


**389.01.1500 Crankshaft**

	OEM	OE
		


**102.01.1580 Nut For Crankshaft**

	OEM	OE
		464642 1315273 1698672 1698672 464642


**389.01.1650 Front Flange**

	OEM	OE
		

**389.01.3300 Pump Support**

	OEM	OE
		


**130.01.2600 Bushing**

	OEM	OE
	B44935 B64572	1309548 0001313050 0001313950 81541300009

**110.01.1700 Piston With Rings (STD)**

	OEM	OE
	SEB22555 I81169004	1361265 1409318 1698848 3095841 51541036001 81541190007 85101375
		110.01.1700-Ø88.00 mm 110.01.1710-Ø88.25 mm 110.01.1720-Ø88.50 mm 110.01.1730-Ø88.75 mm 110.01.1740-Ø89.00 mm

**110.01.1800 Piston Ring Kit (STD)**

	OEM	OE
	I811690062 II39526F0061	3097153 85100626
		110.01.1800-Ø88.00 mm 110.01.1810-Ø88.25 mm 110.01.1820-Ø88.50 mm 110.01.1830-Ø88.75 mm 110.01.1840-Ø89.00 mm

130.01.2300 Repair Kit With Bushing		OEM	OE

130.01.2350 Repair Kit w/o Bushing		OEM	OE

130.01.2330 Repair Kit		OEM	OE

130.01.2320 Repair Kit		OEM	OE

130.01.1280 Head Repair Kit		OEM	OE

130.01.2100 Gasket & Sealing Kit		OEM	OE
		I1147860051 I1186060052	1699822

130.01.2200 Valve Kit		OEM	OE
		I1326830061 I186040061	3091592 3091593

130.01.2500 Unloader Valve Kit		OEM	OE
		I1159920063	3097147

130.01.2800 Cylinder Liner		OEM	OE
		K000998	

130.01.2810 Cylinder Liner Kit		OEM	OE
		K000998 I1808640061	

389.01.2900 Gear		OEM	OE

130.01.2700 Screw Kit		OEM	OE

130.01.2610 Bushing		OEM	OE
		B44935 B64572	0001313150 81541300007

		OEM	OE

		OEM	OE

		OEM	OE

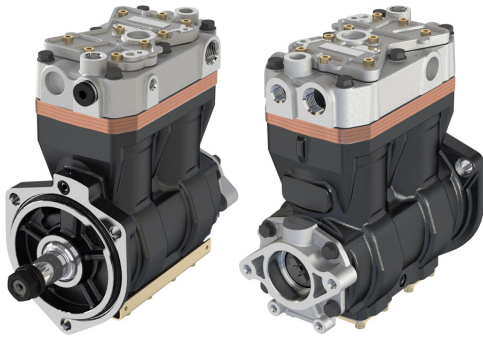
		OEM	OE

		OEM	OE



**459.01.1000 Compressor (Twin Cylinder)**

**Application:** CURSOR 13 ENGINE / STRALIS 260S36 - 260S43 - 260S45 - 440S42 - 440S43



OEM	OE
LK4936	5802799223
K022263N00	DC462875AA
K160498N00	504293730
K160498N03	
K160498X00	
DZ5577	

<b>Cylinder Bore</b>	Ø86
<b>Stroke</b>	54 mm
<b>Swept Volume</b>	628 cc
<b>Air Inlet Port Size</b>	M26*1,5
<b>Air Delivery Port Size</b>	M26*1,5
<b>Number of Cylinders</b>	2
<b>Through Drive</b>	YES
<b>Unloader Port Size</b>	M12*1,5
<b>Water Or Air Cooled</b>	W
<b>Water Inlet Port Size</b>	M18*1,5
<b>Water Delivery Port Size</b>	M18*1,5
<b>Water Cooled Valve Plate</b>	YES

## Components

**409.01.1100 Crankcase**

OEM	OE

**459.01.1200 Cylinder Head**

OEM	OE
K041489K50	42562098

**456.01.1220 Cylinder Upper Head**

OEM	OE

**459.01.1230 Cylinder Lower Head**

OEM	OE

**459.01.1210 Cylinder Head With Plate Kit**

OEM	OE

**459.01.1300 Plate Kit**

OEM	OE
K041488K50 SEB01878004	42562099 8C462B956AA

**409.01.1400 Connecting Rod**

OEM	OE
SEB22464	85104324

**459.01.1500 Crankshaft**

OEM	OE

**409.01.1600 Bearing Cover**

OEM	OE

**434.01.1580 Nut For Crankshaft**

OEM	OE

**408.01.1700 Piston With Rings (STD)**

OEM	OE
SEB22547	42549147 42562096 42534241 42536601

408.01.1700-Ø86.00 mm  
408.01.1710-Ø86.25 mm  
408.01.1720-Ø86.50 mm  
408.01.1730-Ø86.75 mm  
408.01.1740-Ø87.00 mm

**408.01.1800 Piston Ring Kit (STD)**

OEM	OE

408.01.1800-Ø86.00 mm  
408.01.1810-Ø86.25 mm  
408.01.1820-Ø86.50 mm  
408.01.1830-Ø86.75 mm  
408.01.1840-Ø87.00 mm

**458.01.2300 Repair Kit With Bushing**

	OEM	OE

**458.01.2350 Repair Kit w/o Bushing**

	OEM	OE

**458.01.2330 Repair Kit**

	OEM	OE

**458.01.2320 Repair Kit**

	OEM	OE

**458.01.1280 Head Repair Kit**

	OEM	OE

**458.01.2100 Gasket & Sealing Kit**

	OEM	OE
	SEB22550	42549151

**409.01.2200 Valve Kit**

	OEM	OE

**458.01.2500 Unloader Valve Kit**

	OEM	OE
		42562097

**409.01.1900 Bottom Cover Kit**

	OEM	OE

**409.01.2600 Bushing**

	OEM	OE

**102.01.2700 Screw Kit**

	OEM	OE

	OEM	OE

	OEM	OE

	OEM	OE

	OEM	OE

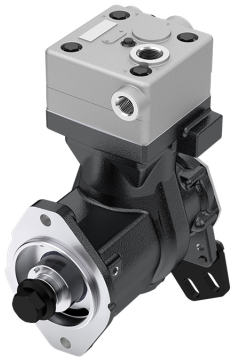
	OEM	OE

	OEM	OE

	OEM	OE

## 612.01.1000 Compressor (Single Cylinder)

**Application:** CUMMINS 6 BTA A - 5,9 FORD F 12000 / F 12000 L / F 14000 / F 14000 H



612.01.1000



612.01.2000 (WITH GEAR)

OEM	OE
9111555010	3357109 BFOX2875CA

<b>Cylinder Bore</b>	Ø85
<b>Stroke</b>	56
<b>Swept Volume</b>	318
<b>Air Inlet Port Size</b>	3/4-14NPT
<b>Air Delivery Port Size</b>	3/4-14NPT
<b>Number of Cylinders</b>	1
<b>Through Drive</b>	YES
<b>Unloader Port Size</b>	M10*1
<b>Water Or Air Cooled</b>	W
<b>Water Inlet Port Size</b>	1/2-14NPT
<b>Water Delivery Port Size</b>	1/2-14NPT
<b>Water Cooled Valve Plate</b>	YES

## Components

**617.01.1100 Crankcase**

OEM	OE

**617.01.1200 Cylinder Head**

OEM	OE
9111558042	

**617.01.1220 Cylinder Upper Head**

OEM	OE
9111556554 8845025794	

**617.01.1230 Cylinder Lower Head**

OEM	OE
9111556524 8845032002	

**143.01.1400 Connecting Rod**

OEM	OE
9111457372 9111457382 9111537302	3357396 0001312417 0001312517

**617.01.1500 Crankshaft**

OEM	OE

**605.01.1510 Pump Adapter**

OEM	OE

**602.01.1502 Screw for Crankshaft**

OEM	OE

**617.01.1600 Bearing Cover**

OEM	OE

**617.01.1640 Cover Kit**

OEM	OE

**136.01.1700 Piston With Rings (STD)**

OEM	OE
9115016242 9115016252 9120006272	1283781 1698686 0001303417 0001305317 81541196040

136.01.1700-Ø85.00 mm  
136.01.1710-Ø85.25 mm  
136.01.1720-Ø85.50 mm  
136.01.1730-Ø85.75 mm  
136.01.1740-Ø86.00 mm

**132.01.1800 Piston Ring Kit (STD)**

OEM	OE
9115019202 9118019202	3094621 0011311111

132.01.1800-Ø85.00 mm  
132.01.1810-Ø85.25 mm  
132.01.1820-Ø85.50 mm  
132.01.1830-Ø85.75 mm  
132.01.1840-Ø86.00 mm

**617.01.2300 Repair Kit With Bushing**

OEM	OE

**617.01.2350 Repair Kit w/o Bushing**

OEM	OE
9111559202	

**617.01.2330 Repair Kit**

OEM	OE

**617.01.1280 Head Repair Kit**

OEM	OE

**617.01.2100 Gasket & Sealing Kit**

OEM	OE
9111559212	

**617.01.2200 Valve Kit**

OEM	OE

**599.01.2500 Unloader Valve Kit**

OEM	OE

**617.01.3300 Pump Support**

OEM	OE

**612.01.2900 Gear**

OEM	OE
	3928861

**575.01.2600 Bushing**

OEM	OE
9111552004	

**136.01.1900 Cap**

OEM	OE
8950735894	1304881 3094835 11712508 0001312321

**136.01.2700 Screw Kit**

OEM	OE
	8912119994

OEM	OE

OEM	OE

OEM	OE

OEM	OE

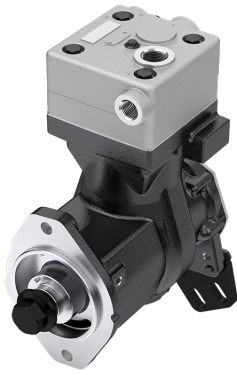
OEM	OE

OEM	OE



## 617.01.1000 Compressor (Single Cylinder)

**Application:** ISB / QSB / ISF ENGINE 1622 / 1630 / 2425 / 2422 / 2630 / 1731 / 4030



617.01.1000



617.01.2000  
(WITH GEAR)

OEM	OE
9111555110	3357113 BFOX2875AA

<b>Cylinder Bore</b>	Ø85
<b>Stroke</b>	56
<b>Swept Volume</b>	318
<b>Air Inlet Port Size</b>	3/4-14NPT
<b>Air Delivery Port Size</b>	3/4-14NPT
<b>Number of Cylinders</b>	1
<b>Through Drive</b>	YES
<b>Unloader Port Size</b>	M10*1
<b>Water Or Air Cooled</b>	W
<b>Water Inlet Port Size</b>	1/2-14NPT
<b>Water Delivery Port Size</b>	1/2-14NPT
<b>Water Cooled Valve Plate</b>	YES

## Components

617.01.1100 Crankcase		
	OEM	OE

617.01.1200 Cylinder Head		
	OEM	OE
	9111558042	

617.01.1220 Cylinder Upper Head		
	OEM	OE
	9111556554 8845025794	

617.01.1230 Cylinder Lower Head		
	OEM	OE
	9111556524 8845032002	

143.01.1400 Connecting Rod		
	OEM	OE
	9111457372 9111457382 9111537302	3357396 0001312417 0001312517

617.01.1500 Crankshaft		
	OEM	OE

605.01.1510 Pump Adapter		
	OEM	OE

602.01.1502 Screw for Crankshaft		
	OEM	OE

617.01.1600 Bearing Cover		
	OEM	OE

617.01.1640 Cover Kit		
	OEM	OE

136.01.1700 Piston With Rings (STD)		
	OEM	OE
	9115016242 9115016252 9120006272	1283781 1698686 0001303417 0001305317 81541196040
136.01.1700-Ø85.00 mm 136.01.1710-Ø85.25 mm 136.01.1720-Ø85.50 mm 136.01.1730-Ø85.75 mm 136.01.1740-Ø86.00 mm		

132.01.1800 Piston Ring Kit (STD)		
	OEM	OE
	9115019202 9118019202	3094621 0011311111
132.01.1800-Ø85.00 mm 132.01.1810-Ø85.25 mm 132.01.1820-Ø85.50 mm 132.01.1830-Ø85.75 mm 132.01.1840-Ø86.00 mm		

**617.01.2300 Repair Kit With Bushing**

	OEM	OE

**617.01.2350 Repair Kit w/o Bushing**

	OEM	OE
	9111559202	

**617.01.2330 Repair Kit**

	OEM	OE

**617.01.1280 Head Repair Kit**

	OEM	OE

**617.01.2100 Gasket & Sealing Kit**

	OEM	OE
	9111559212	

**617.01.2200 Valve Kit**

	OEM	OE

**599.01.2500 Unloader Valve Kit**

	OEM	OE

**136.01.1900 Cap**

	OEM	OE
	8950735894	1304881 3094835 11712508 0001312321

**575.01.2600 Bushing**

	OEM	OE
	9111552004	

**617.01.2900 Gear**

	OEM	OE
		3902595

**617.01.3300 Pump Support**

	OEM	OE

**136.01.2700 Screw Kit**

	OEM	OE
	8912119994	

	OEM	OE

	OEM	OE

	OEM	OE

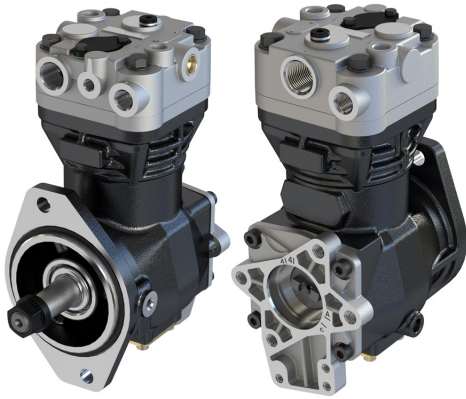
	OEM	OE

	OEM	OE

	OEM	OE

**620.01.1000 Compressor (Single Cylinder)**

Application: B 3.9 CARGO 815



OEM	OE
LK3833	3284791
SEB01586000	3285923
	2C452875AA

<b>Cylinder Bore</b>	Ø80
<b>Stroke</b>	45
<b>Swept Volume</b>	225
<b>Air Inlet Port Size</b>	M26x1.5
<b>Air Delivery Port Size</b>	M22x1.5
<b>Number of Cylinders</b>	1
<b>Through Drive</b>	YES
<b>Unloader Port Size</b>	M10x1
<b>Water Or Air Cooled</b>	W
<b>Water Inlet Port Size</b>	M16x1.5
<b>Water Delivery Port Size</b>	M16x1.5
<b>Water Cooled Valve Plate</b>	YES

## Components

**620.01.1100 Crankcase**

OEM	OE

**620.01.1200 Cylinder Head**

OEM	OE
	SEB01592004

**620.01.1210 Cylinder Head With Plate Kit**

OEM	OE

**620.01.1300 Plate Kit**

OEM	OE
	SEB01593004 SEB22461
	9P918391

**409.01.1400 Connecting Rod**

OEM	OE
	SEB22464
	85104324

**702.01.1500 Crankshaft**

OEM	OE

**702.01.1600 Bearing Cover**

OEM	OE

**120.01.1900 Bottom Cover Kit**

OEM	OE

**102.01.2600 Bushing**

OEM	OE
	EB00819
	1315274 1697278 1697286 5001830853 1697286

**120.01.2700 Screw Kit**

OEM	OE

**120.01.1700 Piston With Rings (STD)**

OEM	OE
	SEB22517
	SEB01594004
	1452718 1844254 42549206 85104325 7421136656 9P918388
	120.01.1700-Ø80.00 mm 120.01.1710-Ø80.25 mm 120.01.1720-Ø80.50 mm 120.01.1730-Ø80.75 mm 120.01.1740-Ø81.00 mm

**120.01.1800 Piston Ring Kit (STD)**

OEM	OE
	SEB22463
	120.01.1800-Ø80.00 mm 120.01.1810-Ø80.25 mm 120.01.1820-Ø80.50 mm 120.01.1830-Ø80.75 mm 120.01.1840-Ø81.00 mm

701.01.2300 Repair Kit With Bushing		OEM	OE

701.01.2350 Repair Kit w/o Bushing		OEM	OE

701.01.2330 Repair Kit		OEM	OE
		SEB22519	

701.01.2320 Repair Kit		OEM	OE

701.01.2340 Repair Kit		OEM	OE

701.01.1280 Head Repair Kit		OEM	OE

434.01.2100 Gasket & Sealing Kit		OEM	OE

120.01.2200 Valve Kit		OEM	OE

620.01.2500 Unloader Valve Kit		OEM	OE
		II38147F0061	5411307715

620.01.1580 Nut For Crankshaft		OEM	OE

		OEM	OE

		OEM	OE

		OEM	OE

		OEM	OE

		OEM	OE

		OEM	OE

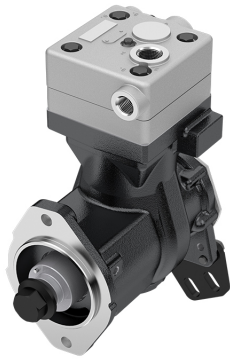
		OEM	OE

		OEM	OE



**634.01.1000 Compressor (Twin Cylinder)**

**Application:** 6 BTA A - 5,9 FORD C 1215 / C 1317 / C 1422 / C 1421 / C 1617 / C 1622



634.01.1000



634.01.2000 (WITH GEAR)

OEM	OE
9111555000	3357107 BFOX2875BA

<b>Cylinder Bore</b>	Ø85
<b>Stroke</b>	56
<b>Swept Volume</b>	318
<b>Air Inlet Port Size</b>	3/4-14NPT
<b>Air Delivery Port Size</b>	3/4-14NPT
<b>Number of Cylinders</b>	1
<b>Through Drive</b>	YES
<b>Unloader Port Size</b>	M10*1
<b>Water Or Air Cooled</b>	W
<b>Water Inlet Port Size</b>	1/2-14NPT
<b>Water Delivery Port Size</b>	1/2-14NPT
<b>Water Cooled Valve Plate</b>	YES

## Components

**634.01.1100 Crankcase**

OEM	OE

**617.01.1200 Cylinder Head**

OEM	OE
	9111558042

**617.01.1220 Cylinder Upper Head**

OEM	OE
	9111556554 8845025794

**617.01.1230 Cylinder Lower Head**

OEM	OE
	9111556524 8845032002

**143.01.1400 Connecting Rod**

OEM	OE	
	9111457372 9111457382 9111537302	3357396 0001312417 0001312517

**617.01.1500 Crankshaft**

OEM	OE

**663.01.1510 Pump Adapter**

OEM	OE

**602.01.1502 Screw for Crankshaft**

OEM	OE

**663.01.1600 Bearing Cover**

OEM	OE

**617.01.1640 Cover Kit**

OEM	OE

**136.01.1700 Piston With Rings (STD)**

OEM	OE	
	9115016242 9115016252 9120006272	1283781 1698686 0001303417 0001305317 81541196040
136.01.1700-Ø85.00 mm 136.01.1710-Ø85.25 mm 136.01.1720-Ø85.50 mm 136.01.1730-Ø85.75 mm 136.01.1740-Ø86.00 mm		

**132.01.1800 Piston Ring Kit (STD)**

OEM	OE	
	9115019202 9118019202	3094621 0011311111
132.01.1800-Ø85.00 mm 132.01.1810-Ø85.25 mm 132.01.1820-Ø85.50 mm 132.01.1830-Ø85.75 mm 132.01.1840-Ø86.00 mm		

**617.01.2300** Repair Kit With Bushing

OEM	OE

**617.01.2350** Repair Kit w/o Bushing

OEM	OE
9111559202	

**617.01.2330** Repair Kit

OEM	OE

**617.01.1280** Head Repair Kit

OEM	OE

**617.01.2100** Gasket & Sealing Kit

OEM	OE
9111559212	

**617.01.2200** Valve Kit

OEM	OE

**599.01.2500** Unloader Valve Kit

OEM	OE

**612.01.2900** Gear

OEM	OE
	3928861

**575.01.2600** Bushing

OEM	OE
	9111552004

**136.01.1900** Cap

OEM	OE
8950735894	1304881 3094835 11712508 0001312321

**136.01.2700** Screw Kit

OEM	OE
	8912119994

OEM	OE

OEM	OE

OEM	OE

OEM	OE

OEM	OE

OEM	OE

OEM	OE

**678.01.1000 Compressor (Single Cylinder)**

**Application:** ISB/QSB/ISF ENGINE /C 1317E / C 1517E / C 1717E / C 2428E



678.01.1000



678.01.2000 (WITH GEAR)

OEM	OE
9111535520	4934957 BG7X2875BA

<b>Cylinder Bore</b>	Ø85
<b>Stroke</b>	56
<b>Swept Volume</b>	318
<b>Air Inlet Port Size</b>	3/4-14NPT
<b>Air Delivery Port Size</b>	3/4-14NPT
<b>Number of Cylinders</b>	1
<b>Through Drive</b>	YES
<b>Unloader Port Size</b>	M10*1
<b>Water Or Air Cooled</b>	W
<b>Water Inlet Port Size</b>	1/2-14NPT
<b>Water Delivery Port Size</b>	1/2-14NPT
<b>Water Cooled Valve Plate</b>	YES

## Components

**678.01.1100 Crankcase**

OEM	OE

**617.01.1200 Cylinder Head**

OEM	OE
9111558042	

**617.01.1220 Cylinder Upper Head**

OEM	OE
9111556554 8845025794	

**617.01.1230 Cylinder Lower Head**

OEM	OE
9111556524 8845032002	

**143.01.1400 Connecting Rod**

OEM	OE
9111457372 9111457382 9111537302	3357396 0001312417 0001312517

**678.01.1500 Crankshaft**

OEM	OE

**663.01.1510 Pump Adapter**

OEM	OE

**678.01.1600 Bearing Cover**

OEM	OE

**136.01.1700 Piston With Rings (STD)**

OEM	OE
9115016242 9115016252 9120006272	1283781 1698686 0001303417 0001305317 81541196040

136.01.1700-Ø85.00 mm  
136.01.1710-Ø85.25 mm  
136.01.1720-Ø85.50 mm  
136.01.1730-Ø85.75 mm  
136.01.1740-Ø86.00 mm

**132.01.1800 Piston Ring Kit (STD)**

OEM	OE
9115019202 9118019202	3094621 0011311111

132.01.1800-Ø85.00 mm  
132.01.1810-Ø85.25 mm  
132.01.1820-Ø85.50 mm  
132.01.1830-Ø85.75 mm  
132.01.1840-Ø86.00 mm

**678.01.2900 Gear**


OEM	OE
	4981225

**575.01.2600 Bushing**

OEM	OE
9111552004	

136.01.1900 Cap		OEM	OE
		8950735894	1304881 3094835 11712508 0001312321


136.01.2700 Screw Kit		OEM	OE
		8912119994	

293.01.1580 Nut For Crankshaft		OEM	OE
		8103410034	0029906650


617.01.2300 Repair Kit With Bushing		OEM	OE
			

617.01.2350 Repair Kit w/o Bushing		OEM	OE
		9111559202	

617.01.2330 Repair Kit		OEM	OE
			

617.01.1280 Head Repair Kit		OEM	OE
			

617.01.2100 Gasket & Sealing Kit		OEM	OE
		9111559212	

617.01.2200 Valve Kit		OEM	OE
			

599.01.2500 Unloader Valve Kit		OEM	OE
			

		OEM	OE

		OEM	OE

		OEM	OE

		OEM	OE

		OEM	OE

		OEM	OE

		OEM	OE

		OEM	OE



**679.01.1000 Compressor (Single Cylinder)**

**Application:** ISB/QSB/ISF ENGINE /FORD C 1317E / C 1517E / C 1717E / C 2428E



679.01.1000



679.01.2000 (WITH GEAR)

OEM	OE
9111535480	3968696 BG5X2875BA

<b>Cylinder Bore</b>	Ø85
<b>Stroke</b>	56
<b>Swept Volume</b>	318
<b>Air Inlet Port Size</b>	3/4-14NPT
<b>Air Delivery Port Size</b>	3/4-14NPT
<b>Number of Cylinders</b>	1
<b>Through Drive</b>	YES
<b>Unloader Port Size</b>	M10*1
<b>Water Or Air Cooled</b>	W
<b>Water Inlet Port Size</b>	1/2-14NPT
<b>Water Delivery Port Size</b>	1/2-14NPT
<b>Water Cooled Valve Plate</b>	YES

## Components

**678.01.1100 Crankcase**

OEM	OE

**617.01.1200 Cylinder Head**

OEM	OE
9111558042	

**617.01.1220 Cylinder Upper Head**

OEM	OE
9111556554 8845025794	

**617.01.1230 Cylinder Lower Head**

OEM	OE
9111556524 8845032002	

**143.01.1400 Connecting Rod**

OEM	OE
9111457372 9111457382 9111537302	3357396 0001312417 0001312517

**678.01.1500 Crankshaft**

OEM	OE

**663.01.1510 Pump Adapter**

OEM	OE

**293.01.1580 Nut For Crankshaft**

OEM	OE
8103410034	0029906650

**678.01.1600 Bearing Cover**

OEM	OE

**136.01.1900 Cap**

OEM	OE
8950735894	1304881 3094835 11712508 0001312321

**136.01.1700 Piston With Rings (STD)**

OEM	OE
9115016242 9115016252 912006272	1283781 1698686 0001303417 0001305317 81541196040

136.01.1700-Ø85.00 mm  
136.01.1710-Ø85.25 mm  
136.01.1720-Ø85.50 mm  
136.01.1730-Ø85.75 mm  
136.01.1740-Ø86.00 mm

**132.01.1800 Piston Ring Kit (STD)**

OEM	OE
9115019202 9118019202	3094621 0011311111

132.01.1800-Ø85.00 mm  
132.01.1810-Ø85.25 mm  
132.01.1820-Ø85.50 mm  
132.01.1830-Ø85.75 mm  
132.01.1840-Ø86.00 mm

**617.01.2300** Repair Kit With Bushing

OEM	OE

**617.01.2350** Repair Kit w/o Bushing

OEM	OE
9111559202	

**617.01.2330** Repair Kit

OEM	OE

**617.01.1280** Head Repair Kit

OEM	OE

**617.01.2100** Gasket & Sealing Kit

OEM	OE
9111559212	

**617.01.2200** Valve Kit

OEM	OE

**599.01.2500** Unloader Valve Kit

OEM	OE

**679.01.2900** Gear

OEM	OE
4929278	

**575.01.2600** Bushing

OEM	OE
9111552004	

**136.01.2700** Screw Kit

OEM	OE
8912119994	

OEM	OE

OEM	OE

OEM	OE

OEM	OE

OEM	OE

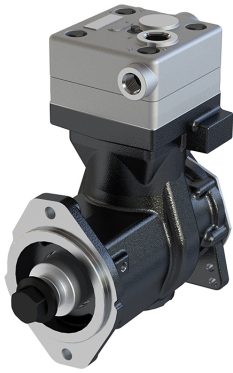
OEM	OE

OEM	OE

OEM	OE

## 684.01.1000 Compressor (Single Cylinder)

**Application:** NEW HOLLAND COLHEITADEIRA / CNH COLHEITADEIRA 2399 / FORD



**684.01.1000**



**684.01.2000 (WITH GEAR)**

OEM	OE
9111555190	87543702 3977020 BG6X2875AA

<b>Cylinder Bore</b>	Ø85
<b>Stroke</b>	56
<b>Swept Volume</b>	318
<b>Air Inlet Port Size</b>	3/4-14NPT
<b>Air Delivery Port Size</b>	3/4-14NPT
<b>Number of Cylinders</b>	1
<b>Through Drive</b>	YES
<b>Unloader Port Size</b>	M12*1,5
<b>Water Or Air Cooled</b>	W
<b>Water Inlet Port Size</b>	1/2-14NPT
<b>Water Delivery Port Size</b>	1/2-14NPT
<b>Water Cooled Valve Plate</b>	YES

## Components

**684.01.1100 Crankcase**

OEM	OE

**617.01.1200 Cylinder Head**

OEM	OE
	9111558042

**617.01.1220 Cylinder Upper Head**

OEM	OE
	9111556554 8845025794

**617.01.1230 Cylinder Lower Head**

OEM	OE
	9111556524 8845032002

**143.01.1400 Connecting Rod**

OEM	OE
	9111457372 3357396 9111457382 0001312417 9111537302 0001312517

**617.01.1500 Crankshaft**

OEM	OE

**663.01.1510 Pump Adapter**

OEM	OE

**602.01.1502 Screw for Crankshaft**

OEM	OE

**663.01.1600 Bearing Cover**

OEM	OE

**617.01.1640 Cover Kit**

OEM	OE

**136.01.1700 Piston With Rings (STD)**

OEM	OE
	9115016242 1283781 9115016252 1698686 912006272 0001303417 0001305317 81541196040
136.01.1700-Ø85.00 mm 136.01.1710-Ø85.25 mm 136.01.1720-Ø85.50 mm 136.01.1730-Ø85.75 mm 136.01.1740-Ø86.00 mm	

**132.01.1800 Piston Ring Kit (STD)**

OEM	OE
	9115019202 3094621 9118019202 0011311111
132.01.1800-Ø85.00 mm 132.01.1810-Ø85.25 mm 132.01.1820-Ø85.50 mm 132.01.1830-Ø85.75 mm 132.01.1840-Ø86.00 mm	

**617.01.2300** Repair Kit With Bushing

OEM	OE

**617.01.2350** Repair Kit w/o Bushing

OEM	OE
9111559202	

**617.01.2330** Repair Kit

OEM	OE

**617.01.1280** Head Repair Kit

OEM	OE

**617.01.2100** Gasket & Sealing Kit

OEM	OE
9111559212	

**617.01.2200** Valve Kit

OEM	OE

**599.01.2500** Unloader Valve Kit

OEM	OE

**603.01.2900** Gear

OEM	OE
	3940239 3942497

**575.01.2600** Bushing

OEM	OE
	9111552004

**136.01.1900** Cap

OEM	OE
8950735894	1304881 3094835 11712508 0001312321

**136.01.2700** Screw Kit

OEM	OE
8912119994	

OEM	OE

OEM	OE

OEM	OE

OEM	OE

OEM	OE

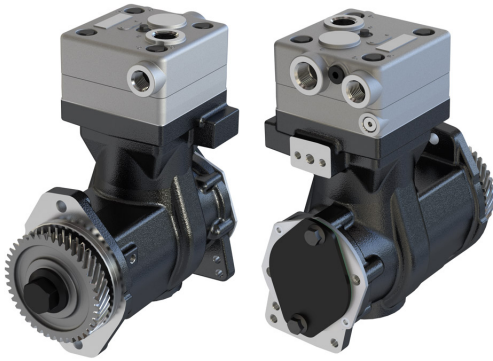
OEM	OE

OEM	OE



**684.01.2000 Compressor (Single Cylinder)**

**Application:** NEW HOLLAND COLHEITADEIRA / CNH COLHEITADEIRA 2399



OEM	OE
9111555190	87543702 3977020 BG6X2875AA

<b>Cylinder Bore</b>	Ø85
<b>Stroke</b>	56
<b>Swept Volume</b>	318
<b>Air Inlet Port Size</b>	3/4"- 14 NPT
<b>Air Delivery Port Size</b>	3/4"- 14 NPT
<b>Number of Cylinders</b>	1
<b>Through Drive</b>	YES
<b>Unloader Port Size</b>	M12*1,5
<b>Water Or Air Cooled</b>	W
<b>Water Inlet Port Size</b>	1/2"- 14 NPT
<b>Water Delivery Port Size</b>	1/2"- 14 NPT
<b>Water Cooled Valve Plate</b>	YES

## Components

**684.01.1100 Crankcase**

OEM	OE

**617.01.1200 Cylinder Head**

OEM	OE
	9111558042

**617.01.1220 Cylinder Upper Head**

OEM	OE
	9111556554 8845025794

**617.01.1230 Cylinder Lower Head**

OEM	OE
	9111556524 8845032002

**143.01.1400 Connecting Rod**

OEM	OE
	9111457372 3357396 9111457382 0001312417 9111537302 0001312517

**617.01.1500 Crankshaft**

OEM	OE

**663.01.1510 Pump Adapter**

OEM	OE

**602.01.1502 Screw for Crankshaft**

OEM	OE

**663.01.1600 Bearing Cover**

OEM	OE

**617.01.1640 Cover Kit**

OEM	OE

**136.01.1700 Piston With Rings (STD)**

OEM	OE
	9115016242 1283781 9115016252 1698686 9120006272 0001303417 0001305317 81541196040
136.01.1700-Ø85.00 mm 136.01.1710-Ø85.25 mm 136.01.1720-Ø85.50 mm 136.01.1730-Ø85.75 mm 136.01.1740-Ø86.00 mm	

**132.01.1800 Piston Ring Kit (STD)**

OEM	OE
	9115019202 3094621 9118019202 0011311111
132.01.1800-Ø85.00 mm 132.01.1810-Ø85.25 mm 132.01.1820-Ø85.50 mm 132.01.1830-Ø85.75 mm 132.01.1840-Ø86.00 mm	

**617.01.2300** Repair Kit With Bushing

OEM	OE

**617.01.2350** Repair Kit w/o Bushing

OEM	OE
9111559202	

**617.01.2330** Repair Kit

OEM	OE

**617.01.1280** Head Repair Kit

OEM	OE

**617.01.2100** Gasket & Sealing Kit

OEM	OE
9111559212	

**617.01.2200** Valve Kit

OEM	OE

**599.01.2500** Unloader Valve Kit

OEM	OE

**603.01.2900** Gear

OEM	OE
	3940239 3942497

**575.01.2600** Bushing

OEM	OE
	9111552004

**136.01.1900** Cap

OEM	OE
8950735894	1304881 3094835 11712508 0001312321

**136.01.2700** Screw Kit

OEM	OE
8912119994	

OEM	OE

OEM	OE

OEM	OE

OEM	OE

OEM	OE

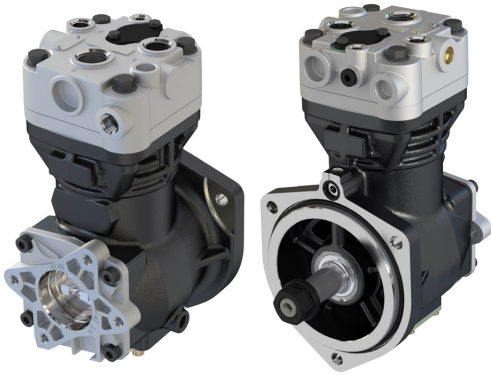
OEM	OE

OEM	OE

**701.01.1000**

**Compressor (Single Cylinder)**

**Application:** CARGO 2524 / CARGO 1826 / CARGO 2526



OEM	OE
LK3848 SEB01799 K019284	7C462875CA

<b>Cylinder Bore</b>	Ø88
<b>Stroke</b>	45
<b>Swept Volume</b>	225
<b>Air Inlet Port Size</b>	M26x1.5
<b>Air Delivery Port Size</b>	M22x1.5
<b>Number of Cylinders</b>	1
<b>Through Drive</b>	YES
<b>Unloader Port Size</b>	M10x1
<b>Water Or Air Cooled</b>	W
<b>Water Inlet Port Size</b>	M16x1.5
<b>Water Delivery Port Size</b>	M16x1.5
<b>Water Cooled Valve Plate</b>	YES

## Components

**701.01.1100 Crankcase**

OEM	OE
	


**701.01.1200 Cylinder Head**

OEM	OE
	SEB01763004

**701.01.1210 Cylinder Head With Plate Kit**

OEM	OE
	

**620.01.1300 Plate Kit**

OEM	OE
	SEB01593004 SEB22461
	9P918391

**409.01.1400 Connecting Rod**

OEM	OE
	SEB22464
	85104324


**434.01.1500 Crankshaft**

OEM	OE
	

**701.01.1600 Bearing Cover**

OEM	OE
	


**120.01.1900 Bottom Cover Kit**

OEM	OE
	

**102.01.2600 Bushing**

OEM	OE
	EB00819
	1315274 1697278 1697286 5001830853 1697286

**120.01.2700 Screw Kit**

OEM	OE
	

**120.01.1700 Piston With Rings (STD)**

OEM	OE
	SEB22517 SEB01594004
	1452718 1844254 42549206 85104325 7421136656 9P918388
	120.01.1700-Ø80.00 mm 120.01.1710-Ø80.25 mm 120.01.1720-Ø80.50 mm 120.01.1730-Ø80.75 mm 120.01.1740-Ø81.00 mm

**120.01.1800 Piston Ring Kit (STD)**

OEM	OE
	SEB22463
	120.01.1800-Ø80.00 mm 120.01.1810-Ø80.25 mm 120.01.1820-Ø80.50 mm 120.01.1830-Ø80.75 mm 120.01.1840-Ø81.00 mm

701.01.2300 Repair Kit With Bushing		OEM	OE

701.01.2350 Repair Kit w/o Bushing		OEM	OE

701.01.2330 Repair Kit		OEM	OE
		SEB22519	

701.01.2320 Repair Kit		OEM	OE

701.01.1280 Head Repair Kit		OEM	OE

701.01.2100 Gasket & Sealing Kit		OEM	OE

120.01.2200 Valve Kit		OEM	OE

620.01.2500 Unloader Valve Kit		OEM	OE
		II38147F0061	5411307715

		OEM	OE

		OEM	OE

		OEM	OE

		OEM	OE

		OEM	OE

		OEM	OE

		OEM	OE

		OEM	OE

		OEM	OE

		OEM	OE



**703.01.1000 Compressor (Single Cylinder)**

Application: CARGO 3230 / CARGO 2532 / CARGO 2532 D / CARGO3 232 C / CARGO3 232 D



703.01.1000



703.01.2000 (WITH GEAR)

OEM	OE
LP3974 K017428 SEB01791	7C462875BA

<b>Cylinder Bore</b>	Ø92
<b>Stroke</b>	54
<b>Swept Volume</b>	360
<b>Air Inlet Port Size</b>	M26x1,5
<b>Air Delivery Port Size</b>	M22x1.5
<b>Number of Cylinders</b>	1
<b>Through Drive</b>	YES
<b>Unloader Port Size</b>	M10x1
<b>Water Or Air Cooled</b>	W
<b>Water Inlet Port Size</b>	M16x1.5
<b>Water Delivery Port Size</b>	M16x1.5
<b>Water Cooled Valve Plate</b>	YES

## Components

**703.01.1100 Crankcase**

OEM	OE

**703.01.1200 Cylinder Head**

OEM	OE
SEB0189004	4C462B960AA

**703.01.1210 Cylinder Head With Plate Kit**

OEM	OE

**703.01.1300 Plate Kit**

OEM	OE
Y004552004	42471272

**409.01.1400 Connecting Rod**

OEM	OE
SEB22464	85104324

**429.01.1500 Crankshaft**

OEM	OE

**701.01.1600 Bearing Cover**

OEM	OE

**102.01.2600 Bushing**

OEM	OE
EB00819	1315274 1697278 1697286 5001830853 1697286

**279.01.2700 Screw Kit**

OEM	OE

**620.01.2500 Unloader Valve Kit**

OEM	OE
I138147F0061	5411307715

**122.01.1700 Piston With Rings (STD)**

OEM	OE
SEB22530 K006026 K012079	21136690 7421136690 51541196008 51541196009
122.01.1700-Ø92.00 mm 122.01.1710-Ø92.25 mm 122.01.1720-Ø92.50 mm 122.01.1730-Ø92.75 mm 122.01.1740-Ø93.00 mm	

**122.01.1800 Piston Ring Kit (STD)**

OEM	OE
122.01.1800-Ø92.00 mm 122.01.1810-Ø92.25 mm 122.01.1820-Ø92.50 mm 122.01.1830-Ø92.75 mm 122.01.1840-Ø93.00 mm	



**703.01.2300** Repair Kit With Bushing

OEM	OE

**703.01.2350** Repair Kit w/o Bushing

OEM	OE
SEB22532	4C462B956BA

**703.01.2330** Repair Kit

OEM	OE
SEB22597	4C462B956AA

**703.01.1280** Head Repair Kit

OEM	OE

**703.01.2100** Gasket & Sealing Kit

OEM	OE

**265.01.2200** Valve Kit

OEM	OE

OEM	OE

OEM	OE

OEM	OE

OEM	OE

OEM	OE

OEM	OE

OEM	OE

OEM	OE

OEM	OE

OEM	OE

OEM	OE

OEM	OE

**704.01.1000 Compressor (Single Cylinder)**

Application: 6.90 / 7.90 / 7.100 / 7.110 / 8.100 / 8.130 / 8.140 / 11.130 / 11.140 / 11.160



OEM	OE
II15179	2RH145605
II15178	BF5T2875B
LK38**	

<b>Cylinder Bore</b>	Ø88
<b>Stroke</b>	37
<b>Swept Volume</b>	225
<b>Air Inlet Port Size</b>	1/2'-14 UNF
<b>Air Delivery Port Size</b>	1/2'-14 UNF
<b>Number of Cylinders</b>	1
<b>Through Drive</b>	YES
<b>Unloader Port Size</b>	-
<b>Water Or Air Cooled</b>	W
<b>Water Inlet Port Size</b>	1/2'-14 NPT
<b>Water Delivery Port Size</b>	1/2'-14 NPT
<b>Water Cooled Valve Plate</b>	YES

## Components

**704.01.2350 Repair Kit w/o Bushing**

OEM	OE

**704.01.2320 Repair Kit**

OEM	OE

**704.01.2100 Gasket & Sealing Kit**

OEM	OE

**130.01.2200 Valve Kit**

OEM	OE
II326830061	3091592
II86040061	3091593

**130.01.2500 Unloader Valve Kit**

OEM	OE
II159920063	3097147

**130.01.2800 Cylinder Liner**

OEM	OE
K000998	

**130.01.2810 Cylinder Liner Kit**

OEM	OE
K000998	
II808640061	

**130.01.2700 Screw Kit**

OEM	OE

**110.01.1700 Piston With Rings (STD)**

OEM	OE
SEB22555	1361265
II81169004	1409318
	1698848
	3095841
	51541036001
	81541190007
	85101375

110.01.1700-Ø88.00 mm  
110.01.1710-Ø88.25 mm  
110.01.1720-Ø88.50 mm  
110.01.1730-Ø88.75 mm  
110.01.1740-Ø89.00 mm

**110.01.1800 Piston Ring Kit (STD)**

OEM	OE
II811690062	3097153
II39526F0061	85100626

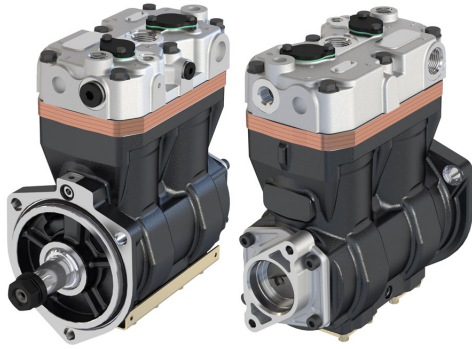
110.01.1800-Ø88.00 mm  
110.01.1810-Ø88.25 mm  
110.01.1820-Ø88.50 mm  
110.01.1830-Ø88.75 mm  
110.01.1840-Ø89.00 mm

OEM	OE

OEM	OE

**710.01.1000 Compressor (Twin Cylinder)**

Application: CARGO 1835 / CARGO 3235



OEM	OE
LK4958	7C462875AE
K013739ES	7C462875AD
K094132N00	

<b>Cylinder Bore</b>	Ø86
<b>Stroke</b>	54
<b>Swept Volume</b>	628
<b>Air Inlet Port Size</b>	M26x1,5
<b>Air Delivery Port Size</b>	M26x1,5
<b>Number of Cylinders</b>	2
<b>Through Drive</b>	YES
<b>Unloader Port Size</b>	M12x1.5
<b>Water Or Air Cooled</b>	W
<b>Water Inlet Port Size</b>	M18x1.5
<b>Water Delivery Port Size</b>	M18x1.5
<b>Water Cooled Valve Plate</b>	YES

## Components

**409.01.1100 Crankcase**

OEM	OE

**710.01.1200 Cylinder Head**

OEM	OE

**710.01.1210 Cylinder Head With Plate Kit**

OEM	OE

**409.01.1300 Plate Kit**

OEM	OE
	SEB01878004 42549149

**409.01.1400 Connecting Rod**

OEM	OE
	SEB22464 85104324

**409.01.1500 Crankshaft**

OEM	OE

**710.01.1600 Bearing Cover**

OEM	OE

**409.01.1900 Bottom Cover Kit**

OEM	OE

**409.01.2600 Bushing**

OEM	OE

**102.01.2700 Screw Kit**

OEM	OE

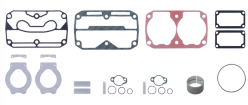
**408.01.1700 Piston With Rings (STD)**

OEM	OE
	SEB22547 42549147 42562096 42534241 42536601
408.01.1700-Ø86.00 mm	
408.01.1710-Ø86.25 mm	
408.01.1720-Ø86.50 mm	
408.01.1730-Ø86.75 mm	
408.01.1740-Ø87.00 mm	


**408.01.1800 Piston Ring Kit (STD)**

OEM	OE
408.01.1800-Ø86.00 mm	
408.01.1810-Ø86.25 mm	
408.01.1820-Ø86.50 mm	
408.01.1830-Ø86.75 mm	
408.01.1840-Ø87.00 mm	


**409.01.2300 Repair Kit With Bushing**

	OEM	OE
		

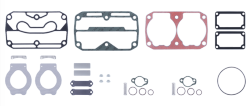
**409.01.2350 Repair Kit w/o Bushing**

	OEM	OE
		

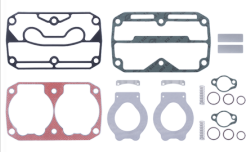
**409.01.2330 Repair Kit**

	OEM	OE
		

**409.01.2320 Repair Kit**

	OEM	OE
		


**409.01.1280 Head Repair Kit**

	OEM	OE
		

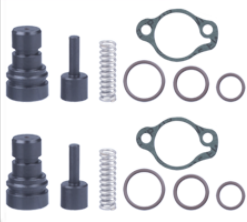
**409.01.2100 Gasket & Sealing Kit**

	OEM	OE
	SEB22550	42549151

**409.01.2200 Valve Kit**

	OEM	OE
		

**409.01.2500 Unloader Valve Kit**

	OEM	OE
		

	OEM	OE

	OEM	OE

	OEM	OE

	OEM	OE

	OEM	OE

	OEM	OE

	OEM	OE

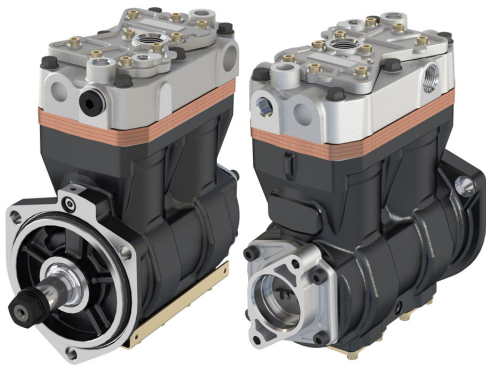
	OEM	OE

	OEM	OE

	OEM	OE

**711.01.1000 Compressor (Twin Cylinder)**

Application: CARGO 1838 / CARGO 2538 / CARGO3238 / CARGO 3936 / CARGO 3538



OEM	OE
LK4958 K013739	7C462875ADN

<b>Cylinder Bore</b>	Ø86
<b>Stroke</b>	54
<b>Swept Volume</b>	628
<b>Air Inlet Port Size</b>	M26x1,5
<b>Air Delivery Port Size</b>	M26x1,5
<b>Number of Cylinders</b>	2
<b>Through Drive</b>	YES
<b>Unloader Port Size</b>	M12x1.5
<b>Water Or Air Cooled</b>	W
<b>Water Inlet Port Size</b>	M18x1.5
<b>Water Delivery Port Size</b>	M18x1.5
<b>Water Cooled Valve Plate</b>	YES

## Components

**409.01.1100 Crankcase**

OEM	OE

**711.01.1200 Cylinder Head**

OEM	OE
K027716	8C462B960AA

**629.01.1220 Cylinder Upper Head**

OEM	OE

**711.01.1230 Cylinder Lower Head**

OEM	OE

**711.01.1210 Cylinder Head With Plate Kit**

OEM	OE
K027716	

**459.01.1300 Plate Kit**

OEM	OE
K041488K50 SEB01878004	42562099 8C462B956AA

**409.01.1400 Connecting Rod**

OEM	OE
SEB22464	85104324

**409.01.1500 Crankshaft**

OEM	OE

**710.01.1600 Bearing Cover**

OEM	OE

**409.01.2600 Bushing**

OEM	OE

**408.01.1700 Piston With Rings (STD)**

OEM	OE
SEB22547	42549147 42562096 42534241 42536601

408.01.1700-Ø86.00 mm  
408.01.1710-Ø86.25 mm  
408.01.1720-Ø86.50 mm  
408.01.1730-Ø86.75 mm  
408.01.1740-Ø87.00 mm

**408.01.1800 Piston Ring Kit (STD)**

OEM	OE

408.01.1800-Ø86.00 mm  
408.01.1810-Ø86.25 mm  
408.01.1820-Ø86.50 mm  
408.01.1830-Ø86.75 mm  
408.01.1840-Ø87.00 mm



**458.01.2300 Repair Kit With Bushing**

	OEM	OE

**458.01.2350 Repair Kit w/o Bushing**

	OEM	OE

**458.01.2330 Repair Kit**

	OEM	OE

**458.01.2320 Repair Kit**

	OEM	OE

**458.01.1280 Head Repair Kit**

	OEM	OE

**458.01.2100 Gasket & Sealing Kit**

	OEM	OE
	SEB22550	42549151

**409.01.2200 Valve Kit**

	OEM	OE

**458.01.2500 Unloader Valve Kit**

	OEM	OE
		42562097

**409.01.1900 Bottom Cover Kit**

	OEM	OE

**102.01.2700 Screw Kit**

	OEM	OE

	OEM	OE

	OEM	OE

	OEM	OE

	OEM	OE

	OEM	OE

	OEM	OE

	OEM	OE

	OEM	OE

**715.01.1000 Compressor (Single Cylinder)**

Application: 4142 / 3542



OEM	OE
LK8921	GC462875BB
K099480N00	
K099480N49	

<b>Cylinder Bore</b>	Ø92
<b>Stroke</b>	54
<b>Swept Volume</b>	360
<b>Air Inlet Port Size</b>	M26x1,5
<b>Air Delivery Port Size</b>	M22x1.5
<b>Number of Cylinders</b>	1
<b>Through Drive</b>	YES
<b>Unloader Port Size</b>	M10x1
<b>Water Or Air Cooled</b>	W
<b>Water Inlet Port Size</b>	M16x1.5
<b>Water Delivery Port Size</b>	M16x1.5
<b>Water Cooled Valve Plate</b>	YES

## Components

**715.01.1100 Crankcase**

OEM	OE

**715.01.1200 Cylinder Head**

OEM	OE

**715.01.1210 Cylinder Head With Plate Kit**

OEM	OE

**703.01.1300 Plate Kit**

OEM	OE
Y004552004	42471272

**409.01.1400 Connecting Rod**

OEM	OE
SEB22464	85104324

**429.01.1500 Crankshaft**

OEM	OE

**532.01.1600 Bearing Cover**

OEM	OE

**102.01.2600 Bushing**

OEM	OE
EB00819	1315274 1697278 1697286 5001830853 1697286

**279.01.2700 Screw Kit**

OEM	OE

**265.01.2200 Valve Kit**

OEM	OE

**122.01.1700 Piston With Rings (STD)**

OEM	OE
SEB22530	21136690
K006026	7421136690
K012079	51541196008 51541196009
122.01.1700-Ø92.00 mm	
122.01.1710-Ø92.25 mm	
122.01.1720-Ø92.50 mm	
122.01.1730-Ø92.75 mm	
122.01.1740-Ø93.00 mm	

**122.01.1800 Piston Ring Kit (STD)**

OEM	OE
122.01.1800-Ø92.00 mm	
122.01.1810-Ø92.25 mm	
122.01.1820-Ø92.50 mm	
122.01.1830-Ø92.75 mm	
122.01.1840-Ø93.00 mm	

**703.01.2300 Repair Kit With Bushing**

OEM	OE

**703.01.2350 Repair Kit w/o Bushing**

OEM	OE
SEB22532	4C462B956BA

**703.01.2330 Repair Kit**

OEM	OE
SEB22597	4C462B956AA

**703.01.1280 Head Repair Kit**

OEM	OE

**703.01.2100 Gasket & Sealing Kit**

OEM	OE

**620.01.2500 Unloader Valve Kit**

OEM	OE
1138147F0061	5411307715

OEM	OE

OEM	OE

OEM	OE

OEM	OE

OEM	OE

OEM	OE

OEM	OE

OEM	OE

OEM	OE

OEM	OE

OEM	OE

OEM	OE

**716.01.1000 Compressor (Single Cylinder)**

Application: 1833 / 2533 / 3233



OEM	OE
LK8922	GC462875CA
K099511N00	
K099511N49	

<b>Cylinder Bore</b>	Ø92
<b>Stroke</b>	54
<b>Swept Volume</b>	360
<b>Air Inlet Port Size</b>	M26x1,5
<b>Air Delivery Port Size</b>	M22x1.5
<b>Number of Cylinders</b>	1
<b>Through Drive</b>	YES
<b>Unloader Port Size</b>	M10x1
<b>Water Or Air Cooled</b>	W
<b>Water Inlet Port Size</b>	M16x1.5
<b>Water Delivery Port Size</b>	M16x1.5
<b>Water Cooled Valve Plate</b>	YES

## Components

**703.01.1100 Crankcase**

OEM	OE

**716.01.1200 Cylinder Head**

OEM	OE

**716.01.1210 Cylinder Head With Plate Kit**

OEM	OE

**703.01.1300 Plate Kit**

OEM	OE
Y004552004	42471272

**409.01.1400 Connecting Rod**

OEM	OE
SEB22464	85104324

**429.01.1500 Crankshaft**

OEM	OE

**701.01.1600 Bearing Cover**

OEM	OE

**102.01.2600 Bushing**

OEM	OE
EB00819	1315274 1697278 1697286 5001830853 1697286

**279.01.2700 Screw Kit**

OEM	OE

**265.01.2200 Valve Kit**

OEM	OE

**122.01.1700 Piston With Rings (STD)**

OEM	OE
SEB22530	21136690
K006026	7421136690
K012079	51541196008 51541196009

122.01.1700-Ø92.00 mm  
122.01.1710-Ø92.25 mm  
122.01.1720-Ø92.50 mm  
122.01.1730-Ø92.75 mm  
122.01.1740-Ø93.00 mm

**122.01.1800 Piston Ring Kit (STD)**

OEM	OE

122.01.1800-Ø92.00 mm  
122.01.1810-Ø92.25 mm  
122.01.1820-Ø92.50 mm  
122.01.1830-Ø92.75 mm  
122.01.1840-Ø93.00 mm

703.01.2300 Repair Kit With Bushing	
OEM	OE

703.01.2350 Repair Kit w/o Bushing	
OEM	OE
	SEB22532 4C462B956BA

703.01.2330 Repair Kit	
OEM	OE
	SEB22597 4C462B956AA

703.01.1280 Head Repair Kit	
OEM	OE

703.01.2100 Gasket & Sealing Kit	
OEM	OE

620.01.2500 Unloader Valve Kit	
OEM	OE
	1138147F0061 5411307715

OEM	OE

OEM	OE

OEM	OE

OEM	OE

OEM	OE

OEM	OE

OEM	OE

OEM	OE

OEM	OE

OEM	OE

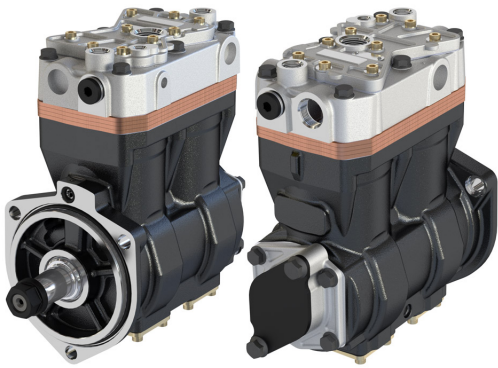
OEM	OE

OEM	OE



**744.01.1000 Compressor (Twin Cylinder)**

Application: 630 cc



OEM	OE
LK4993	GC462875DB
K126852N00	GC462875DC
K126852N49	
LK4991	
K099770N00	
K099770N49	

<b>Cylinder Bore</b>	Ø86
<b>Stroke</b>	54
<b>Swept Volume</b>	628
<b>Air Inlet Port Size</b>	M26x1,5
<b>Air Delivery Port Size</b>	M26x1.5
<b>Number of Cylinders</b>	2
<b>Through Drive</b>	Yes
<b>Unloader Port Size</b>	M12*1,5
<b>Water Or Air Cooled</b>	W
<b>Water Inlet Port Size</b>	M18x1.5
<b>Water Delivery Port Size</b>	M18x1.5
<b>Water Cooled Valve Plate</b>	Yes

## Components

**744.01.1100 Crankcase**

OEM	OE

**744.01.1210 Cylinder Head With Plate Kit**

OEM	OE

**409.01.1400 Connecting Rod**

OEM	OE
SEB22464	85104324

**409.01.1470 Connecting Rod & Piston Rep Kit**

OEM	OE

**409.01.1500 Crankshaft**

OEM	OE

**400.01.1580 Nut For Crankshaft**

OEM	OE
	464642

**710.01.1600 Bearing Cover**

OEM	OE

**409.01.2600 Bushing**

OEM	OE

**409.01.1900 Bottom Cover Kit**

OEM	OE

**409.01.2200 Valve Kit**

OEM	OE

**408.01.1700 Piston With Rings (STD)**

OEM	OE
SEB22547	42549147 42562096 42534241 42536601

408.01.1700-Ø86.00 mm  
408.01.1710-Ø86.25 mm  
408.01.1720-Ø86.50 mm  
408.01.1730-Ø86.75 mm  
408.01.1740-Ø87.00 mm

**408.01.1800 Piston Ring Kit (STD)**

OEM	OE

408.01.1800-Ø86.00 mm  
408.01.1810-Ø86.25 mm  
408.01.1820-Ø86.50 mm  
408.01.1830-Ø86.75 mm  
408.01.1840-Ø87.00 mm

**459.01.1300 Plate Kit**

OEM	OE
K041488K50 SEB01878004	42562099 8C462B956AA

**459.01.1310 Plate Kit, Complete**

OEM	OE

**458.01.2300 Repair Kit With Bushing**

OEM	OE

**458.01.2350 Repair Kit w/o Bushing**

OEM	OE

**458.01.2330 Repair Kit**

OEM	OE

**458.01.2320 Repair Kit**

OEM	OE

**458.01.2360 Repair Kit**

OEM	OE
K083735K50	

**458.01.2100 Gasket & Sealing Kit**

OEM	OE
SEB22550	42549151

**458.01.2170 Gasket & Sealing Kit**

OEM	OE
SEB22550	42549151

**458.01.1280 Head Repair Kit**

OEM	OE

**458.01.2500 Unloader Valve Kit**

OEM	OE
	42562097

OEM	OE

OEM	OE

OEM	OE

OEM	OE

OEM	OE

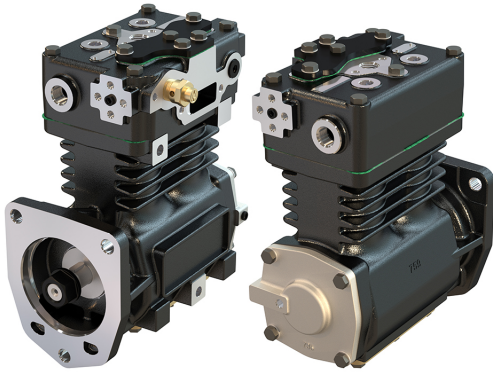
OEM	OE

OEM	OE

**759.01.1000**

**Compressor (Twin Cylinder)**

**Application:** CATERPILLAR ENGINE Earthmoving Compactor 825C 826C - Motor Grade



OEM	OE
Tu-Flo550	108990
5003230	800292
5003229	65684
5003228	65465
5002984	65424
5002032	215-8055
5001774	0R-3845
5001773	0R-8340
5001523	1316679
5001522	745X5002984
109861	102-9551
109860	
109816	
109321	
109319	
109139	
109138	

<b>Cylinder Bore</b>	Ø70,64
<b>Stroke</b>	38
<b>Swept Volume</b>	298
<b>Air Inlet Port Size</b>	-
<b>Air Delivery Port Size</b>	1/2'-14 NPTF
<b>Number of Cylinders</b>	2
<b>Through Drive</b>	Yes
<b>Unloader Port Size</b>	1/8'- 27 NPTF
<b>Water Or Air Cooled</b>	W
<b>Water Inlet Port Size</b>	1/2'-14 NPTF
<b>Water Delivery Port Size</b>	1/2'-14 NPTF
<b>Water Cooled Valve Plate</b>	Yes

## Components

**759.01.1100 Crankcase**

OEM	OE

**712.01.1200 Cylinder Head**

OEM	OE
107082	9P920283

**712.01.1400 Connecting Rod**

OEM	OE
108841	

**712.01.1410 Big end Bearing**

OEM	OE
107651	

**712.01.1470 Connecting Rod & Piston Rep**

OEM	OE
108843	

**759.01.1500 Crankshaft**

OEM	OE

**636.01.1580 Nut For Crankshaft**

OEM	OE

**759.01.1600 Bearing Cover**

OEM	OE

**712.01.1700 Piston With Rings (STD)**

OEM	OE
712.01.1700-Ø70.64 mm	
712.01.1710-Ø70.89 mm	
712.01.1720-Ø71.14 mm	
712.01.1730-Ø71.39 mm	
712.01.1740-Ø71.64 mm	

**712.01.1701 Piston (STD)**

OEM	OE
107647	
712.01.1701-Ø70.64 mm	
712.01.1711-Ø70.89 mm	
712.01.1721-Ø71.14 mm	
712.01.1731-Ø71.39 mm	
712.01.1741-Ø71.64 mm	

**712.01.1800 Piston Ring Kit (STD)**

OEM	OE
5005361	
107639	
712.01.1800-Ø70.64 mm	
712.01.1810-Ø70.89 mm	
712.01.1820-Ø71.14 mm	
712.01.1830-Ø71.39 mm	
712.01.1840-Ø71.64 mm	

**712.01.2350 Repair Kit w/o Bushing**

OEM	OE
107516	107516
	2K200296

712.01.2320 Repair Kit		OEM	OE

712.01.2100 Gasket & Sealing Kit		OEM	OE

712.01.2200 Valve Kit		OEM	OE

735.01.2600 Bushing		OEM	OE

672.01.2600 Bushing		OEM	OE
			AK2500350R

		OEM	OE

		OEM	OE

		OEM	OE

		OEM	OE

		OEM	OE

		OEM	OE

		OEM	OE

		OEM	OE

		OEM	OE

		OEM	OE

		OEM	OE

		OEM	OE

		OEM	OE

769.01.1000

Compressor (Twin Cylinder)

Application: 1948 T / 1848



OEM	OE	Swept Volume	636 cc
9125270000	GC462875AB GC462875AA		

## Components

**769.01.1100 Crankcase**

OEM	OE

**769.01.1200 Cylinder Head**

OEM	OE
9125279202	GC462K893AA

**769.01.1220 Cylinder Upper Head**

OEM	OE

**160.01.1230 Cylinder Lower Head**

OEM	OE

**139.01.1300 Coolant Plate**

OEM	OE

**143.01.1400 Connecting Rod**

OEM	OE
9111457372 9111457382 9111537302	3357396 0001312417 0001312517

**143.01.1470 Connecting Rod & Piston Rep**

OEM	OE
9111539422 9125129292	

**7119.01.1500 Crankshaft**

OEM	OE

**160.01.1580 Nut For Crankshaft**

OEM	OE

**143.01.1600 Rear Cover**

OEM	OE
8950723004	697140

**160.01.1103 Bearing**


OEM	OE

**136.01.1700 Piston With Rings (STD)**

OEM	OE
9115016242 9115016252 9120006272	1283781 1698686 0001303417 0001305317 81541196040

136.01.1700-Ø85.00 mm  
136.01.1710-Ø85.25 mm  
136.01.1720-Ø85.50 mm  
136.01.1730-Ø85.75 mm  
136.01.1740-Ø86.00 mm





132.01.1800 Piston Ring Kit (STD)	
OEM	OE
 9115019202 9118019202	3094621 0011311111
132.01.1800-Ø85.00 mm 132.01.1810-Ø85.25 mm 132.01.1820-Ø85.50 mm 132.01.1830-Ø85.75 mm 132.01.1840-Ø86.00 mm	


136.01.1900 Cap	
OEM	OE
	8950735894 1304881 3094835 11712508 0001312321


143.01.2600 Bushing	
OEM	OE
	


138.01.2700 Screw Kit	
OEM	OE
	

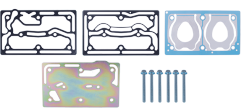
769.01.2300 Repair Kit With Bushing	
OEM	OE
	

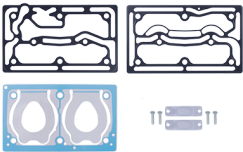
769.01.2350 Repair Kit w/o Bushing	
OEM	OE
	


769.01.2310 Repair Kit With Bushing & Plate	
OEM	OE
	


769.01.2330 Repair Kit	
OEM	OE
	

769.01.2320 Repair Kit	
OEM	OE
	9125279212

160.01.2340 Repair Kit	
OEM	OE
	9125129272 21322318 7421322318

160.01.1280 Head Repair Kit	
OEM	OE
	

769.01.2100 Gasket & Sealing Kit	
OEM	OE
	

160.01.2200 Valve Kit	
OEM	OE
	

OEM	OE

OEM	OE

OEM	OE

OEM	OE

OEM	OE